

FritsJurgens





FOREWORD

Evolution [evəˈluʃən]: gradual development.

Evolution is movement.

Evolution is the future.

Evolution is a choice.

Choose to evolve.

A handwritten signature in black ink, reading "Frits Jurgens". The script is fluid and cursive, with the first name "Frits" and last name "Jurgens" clearly distinguishable.

PROJECTS

14 - 19	20 - 23	24 - 25	26 - 27	28 - 31	32 - 37	38 - 43	44 - 47
THE PIVOTING BOOKCASE	AUTOMATED ARCHITECTURE	FUNCTION AND FORM UNITED	THE WAY OF ITALIAN DESIGN	THE POWER OF METAL DESIGN	THE STORY BEHIND THE DOOR	HIDDEN AUTONOMOUS ENTITY	STYLISH YET HOMELY LIVING
The Netherlands	The United Kingdom	The Netherlands	Italy	The Netherlands	The United States	Belgium	Germany



48 - 51

**COPPER PIVOT
ENTRANCE**

Australia



52 - 53

**HISTORIC
BUILDING
REDESIGNED**

Germany



54 - 59

**A COMFORTABLE
WORKPLACE**

The Netherlands



60 - 63

**THE IDEAL
PIVOT HINGE**

The Netherlands



64 - 65

**BED,
CABINET, AND
DOOR IN ONE**

The United States



66 - 69

**LOVE
FOR DESIGN**

Austria



70 - 73

**SHOWPIECE
IN THE HALL**

The Netherlands



74 - 77

**A COPPER
EYECATCHER**

Australia



PROJECTS

78 - 79	86 - 89	90 - 91	92 - 95	96 - 97	98 - 99	100 - 101	102 - 105
DARK AND MODERN DESIGN	ADJUSTABLE ROOM DIVIDERS	MODERN AND INVITING	THE ART OF BUERO WAGNER	STYLISH AND SLEEK DESIGN	ENDLESS OPTIONS	LIGHT, WARM, AND SOFT	LIFESTYLE AND LUXURY
Croatia	Australia	The Netherlands	Germany	The Netherlands	Austria	The Netherlands	The United States



106 - 107

**BIG, BIGGER,
BIGGEST**

The Netherlands



108 - 111

**PERFECT
BATHROOM
ENTRANCE**

The Netherlands



112 - 113

**A SURPRISING
ENTRANCE**

The United States



118 - 123

**SPECIAL
MIRROR
COATING**

Switzerland



124 - 127

**FIRST-CLASS
ENTERTAINMENT**

The Netherlands



ARTICLES

8 - 13

CHOOSE TO EVOLVE



80 - 85

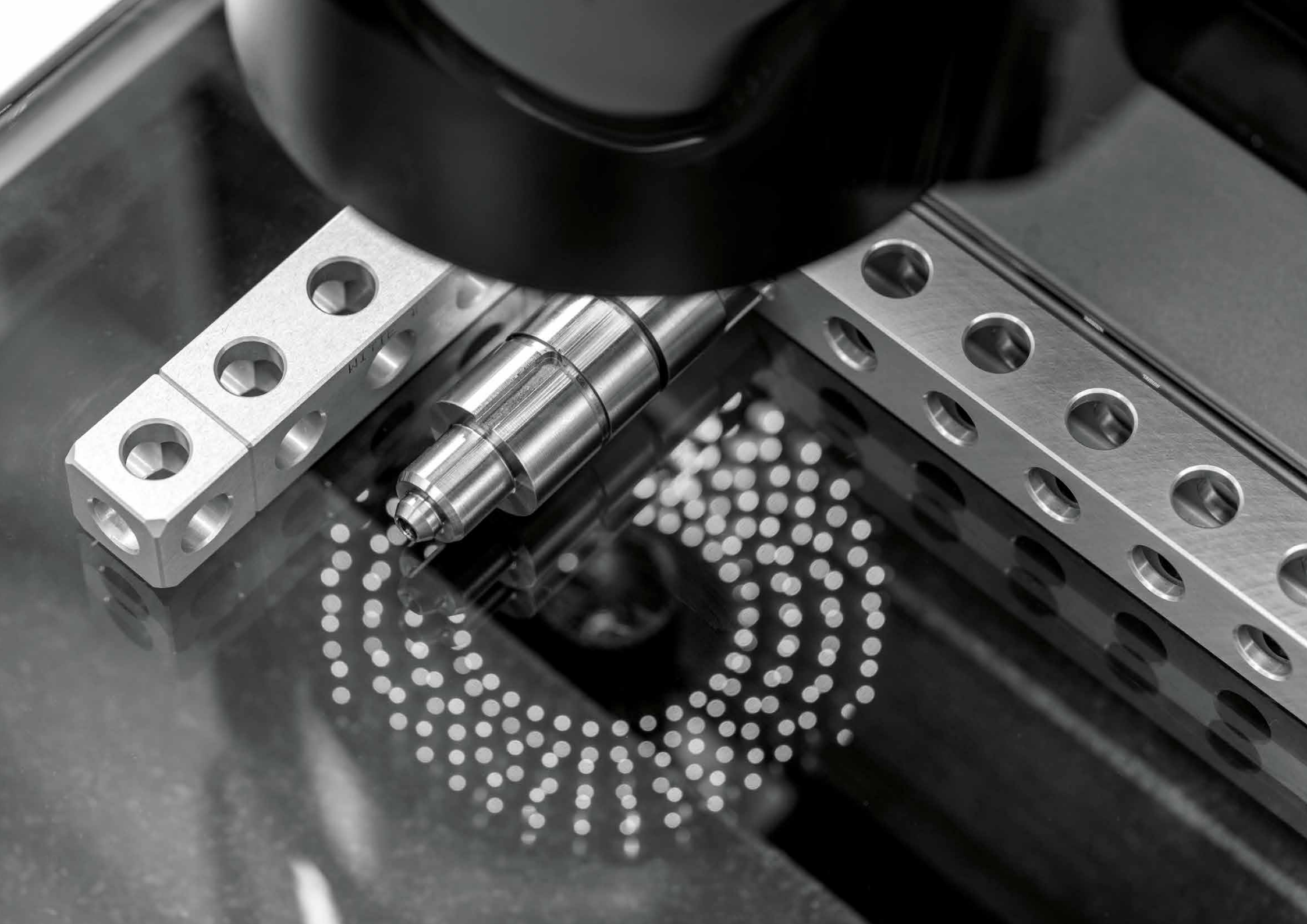
AN INSPIRING WORK ENVIRONMENT



114 - 117

CONTINUOUS IMPROVEMENT





CHOOSE TO EVOLVE

EVOLUTION AS A BASIC PRINCIPLE

The English word ‘evolution’ originally comes from the Latin *evolutio*, which means ‘the act of unrolling, unfolding or opening’. This word in its turn originates from *ēvolvere* – formed from *ex-* and *volvere* – which translates as ‘the act of turning’. Here one may think of volta, or revolver.

FOOTSTEPS

Turning, rotating, pivoting – that’s what FritsJurgens is about. Every day, we choose to evolve: to move, to build a future as we see it. In the development of mankind, discovering new technologies has always been crucial. In whose footsteps does the discovering, creating and evolving human follow?

GRADUAL CHANGE

The French ‘*évolution*’ has the same origin as the English word, although it was originally used in the military. In the 17th century, the word referred to ‘the swerving or movements of warriors’. For example, place-changing, front-changing and formation-changing evolution.

Since the middle of the 19th century, the word has been commonly used as ‘gradual change’, as opposed to revolution: ‘sudden radical change’ and gained wider

awareness as the word was applied in the evolution theory of Charles Darwin.



IMPACT ON EVOLUTION

Everything around us is subject to the comprehensive, although often excruciatingly slow whims of the evolution theory to which Darwin owes his fame. From the cells in our body to the falling leaves in our backyard in the fall.

Over the past thousands of years, homo sapiens (the wise human), characterized by their upright posture and large brains, has quickly changed the definition of 'evolution' and the development of the world and life around us.

AN EASIER LIFE

It took millions of years before our ancestors could manufacture more complicated tools. Today, one technology follows another in rapid succession and we no longer even think of the time that it

took before our ancestors, after settling in a single place, started inventing techniques that made their lives easier.

Where our ancestors worked, hunted or searched for food for days, or sometimes even weeks or months, on end, we are welcomed home by our imaginary friend Alexa who switches on our TV for us and zaps to our favorite cooking program.

PROMETHEUS' GIFT

People have always been busy improving their situation. This takes all kinds of forms, but is most clearly visible in the world of technology. Let's go on a quick journey through time.

Let's begin with Prometheus' gift, fire. Control over fire was an extremely important tipping point in the development of mankind. This skill gave man the first form

of energy. Thanks to fire, among other things, our ancestors were able to settle in a permanent, fertile place to live. They created a permanent source of food, and the population increased.

FOCUS

The campfire was replaced by a hearth. Where in earlier centuries the campfire had become the central point for communities, the hearth, focus in Latin, took over this function and added many new ones.

Lead, copper, bronze, and eventually also the working of iron heralded a new era.

SHARP CONTRAST

Land surveying, astronomy, mathematics, time calculation, book printing, the telescope, the microscope, and gun powder – only a few centuries later the technology developed by homo sapiens was in sharp



Benjamin Franklin discovered the lightning rod while flying a kite in 1752.

contrast with what their ancestors had at their disposal. At the end of the 18th century, the steam engine marked the beginning of the industrial revolution – the steam engine invented by Heron of Alexandria (10-70 AC) came just a little too early.

THE TECHNOLOGY

In 1722, Johann Beckmann used the word ‘technology’ for the first time.

tech·no·lo·gy: the doctrine of the operations that the raw materials undergo for a particular branch of industry; doctrine of the operations and mechanical tools.

Later followed a kite experiment in Franklin’s research on electricity and the coincidence of Fleming’s penicillin.

FROM WAR TO HIGH TECH

In the years that followed, war dominated the world, as it did that of technology. The radar, computer, rocket, jet engine and sonar are all inventions driven by the needs of the world wars.

After that, technology developed into high tech: technology became smarter, in some cases even smarter than we are. The invention of the Internet in 1991 has had a radical impact on the world of homo sapiens today.

A CHOICE

All the said developments have greatly impacted the relationships between people, not only between individuals but also between complete communities. Where evolution used to happen to us at first, we now have complete control over it. We are able to choose how we evolve.

UNCHANGED

Let's go back in time again. Back to the moment where our ancestors decided to stay in the same place for a longer period of time, or sometimes even to settle for life. To the place where they stood at the cradle of technology. In that time, a crucial element was created, which has virtually remained unchanged throughout the centuries. The door. The pivot door, to be precise.

THE FIRST PIVOT DOOR

The technology of the pivot door is simple and goes back many centuries. An example of very early pivot doors can be found in the ancient city of Persepolis, in modern Iran. Various indications of pivot doors were found in the Gate of All Nations, a grand hall which build was ordered by Achaemenid king Xerxes I, between 486 and 465 BC.

PIVOTING PORTAL

One of the sockets that were found in the ancient city of Persepolis, modern Iran, was used for the bottom pivot of an ancient pivoting portal. These early pivot doors were hung by pivots that rotated in holes in the still and the lintel. A great example is the stone doors in Hampi, India.



One of the sockets that were found in the ancient city of Persepolis, modern Iran, was used for the bottom pivot of an ancient pivoting portal.



Two massive stone pivot doors in Hampi, India, where the spindles are still clearly visible. Image courtesy of Shriram Swaminathan.

HINGED PANEL

A pivot door is basically a hinged panel that can take any type of design and measurement. It exists of the door, a pivot system, a top pivot, a floor plate, and a ceiling plate.

MODERN PIVOT HINGES

Contrary to the ancient pivot doors, modern-day pivot doors do not rotate on an extension of the vertical axis, but on a pivot hinge system and a top pivot. The pivot hinge is mortised inside the bottom of the door, and the top pivot is mortised inside the top of the door. Both are invisible in the finished door.

These pivot hinges are placed at any desired position in the door. This determines the location of the vertical axis – the spindle – on which the door pivots.

THE FIRST FRITSJURGENS HINGE

Although the first FritsJurgens hinges still look a bit like the current ones, they have certainly been affected by the evolution that bears the test of time. Although the principle – mortised invisibly in the door – has not changed, the realization has never stopped evolving. Where there is room for evolution, that evolution is necessary to continue to guarantee the best possible product.

FRITSJURGENS' BASIC PRINCIPLES

FritsJurgens is the result of a number of basic principles that have remained unchanged over the years. An eye for detail. Craftsmanship. Quality above all. That is what makes our hinges FritsJurgens. The choice to evolve, the choice to continue

developing. The passion to take the lead, and to stay in that position.

PASSION FOR EVOLUTION

We are driven by our passion for evolution – that passion is part of our vision of the future. A vision in which architects, designers and makers can create their own evolution, thanks to making a static thing into one that moves. In which they can show our surroundings from a new perspective. So that, together, we can design the world as we envisage it and evolve together. Like the Latin *volvere* pivots around its axis, so does our evolution pivot at full speed.



A TRANSFORMED BALLET SCHOOL

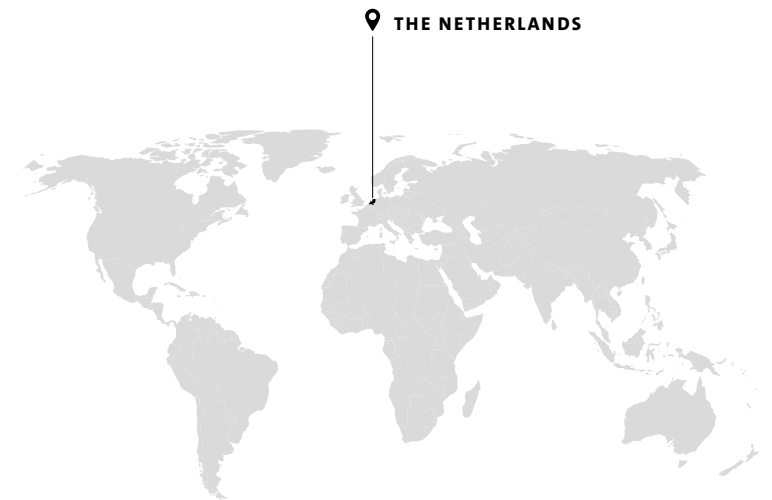
THE PIVOTING BOOKCASE

This former ballet studio in Amsterdam is now home to a beautiful family dwelling. In such a large, open location, room dividers are essential to create an inviting home. Standard Studio opted for a pivoting bookcase – the perfect solution for a cozy atmosphere. The result: a unique mix between hominess and a distinctive design.

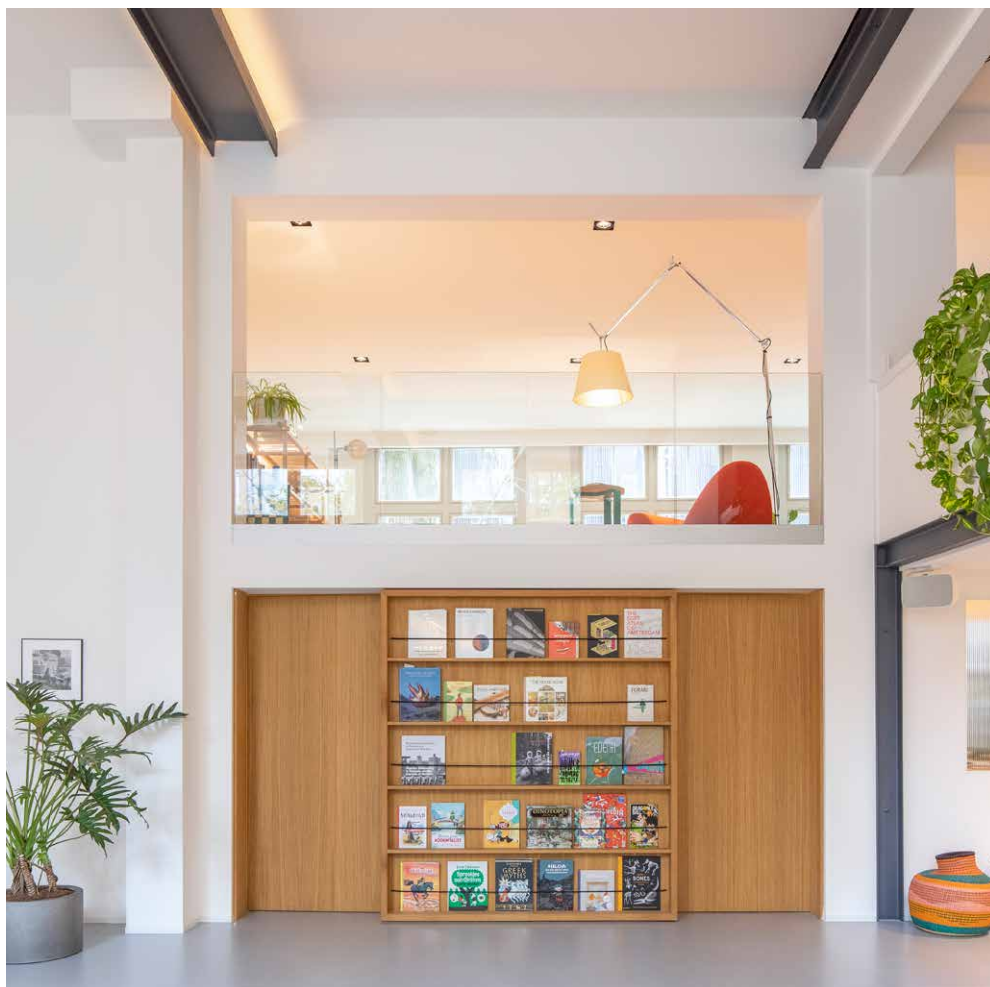
BALANCE BY USING ROOM DIVIDERS

Providing both functionality and balance in a spacious studio is quite a challenge. Nevertheless, it was achieved here, among other things thanks to the dual function of the pivoting bookcase. One side of the bookcase displays books, while the other functions as a television wall. This way, the pivot system offers the possibility to transform the character of rooms in one single movement.

DESIGNED BY **STANDARD STUDIO** MANUFACTURED BY **BRANDSING MEUBELMAKERS**
PHOTOGRAPHED BY **WOUTER VAN DER SAR** FRITSJURGENS SYSTEM **SYSTEM 3**







SURPRISING DUAL FUNCTION

Although this house has smart room dividers everywhere, the bookcase is still the most surprising one. It has a hinged door on both sides, again with a dual function. When open, the two doors give access to the play room or the living room, while at the same time hiding the television.



THE GRANDEST OF BESPOKE GESTURES

All the bespoke furniture is essential for the experience of the various rooms. The grand gestures fit in well with an interior with so much light and air. Brandsing Meubelmakers manufactured each solid piece of furniture, as they did the pivoting bookcase, equipped with FritsJurgens System 3 and cable grommet.



GRAND ROOMS, PLAYFUL DETAILS

The small, sophisticated details make the house a beautiful whole, while at the same time breaking the large space. The black color of the support beams of the ceiling comes back in the cooking island and the kitchen cupboards. Moreover, the round, natural shapes in the interior give the house that extra homely nudge: from sofa to side table.

Various smart applications ensure that a ballet school transformed to a cozy family home. There is something new in every corner: whether it is the pivoting bookcase, a multifunctional staircase or a surprising piece of furniture. All room dividers ensure a different experience of the house every time and offer many unique functionalities.





AUAR'S INNOVATIVE HOME

AUTOMATED ARCHITECTURE

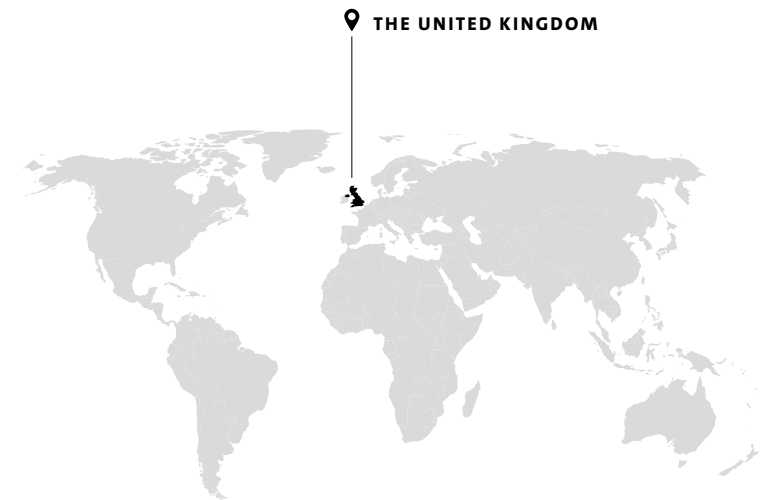
This project is a great combination between technology, innovation, and a clear view of the future. AUAR's modular wood building systems use robotics and automation. Homes are assembled by a robot, which makes it possible to build on small surfaces. This way, AUAR contributes to social and technological infrastructure.

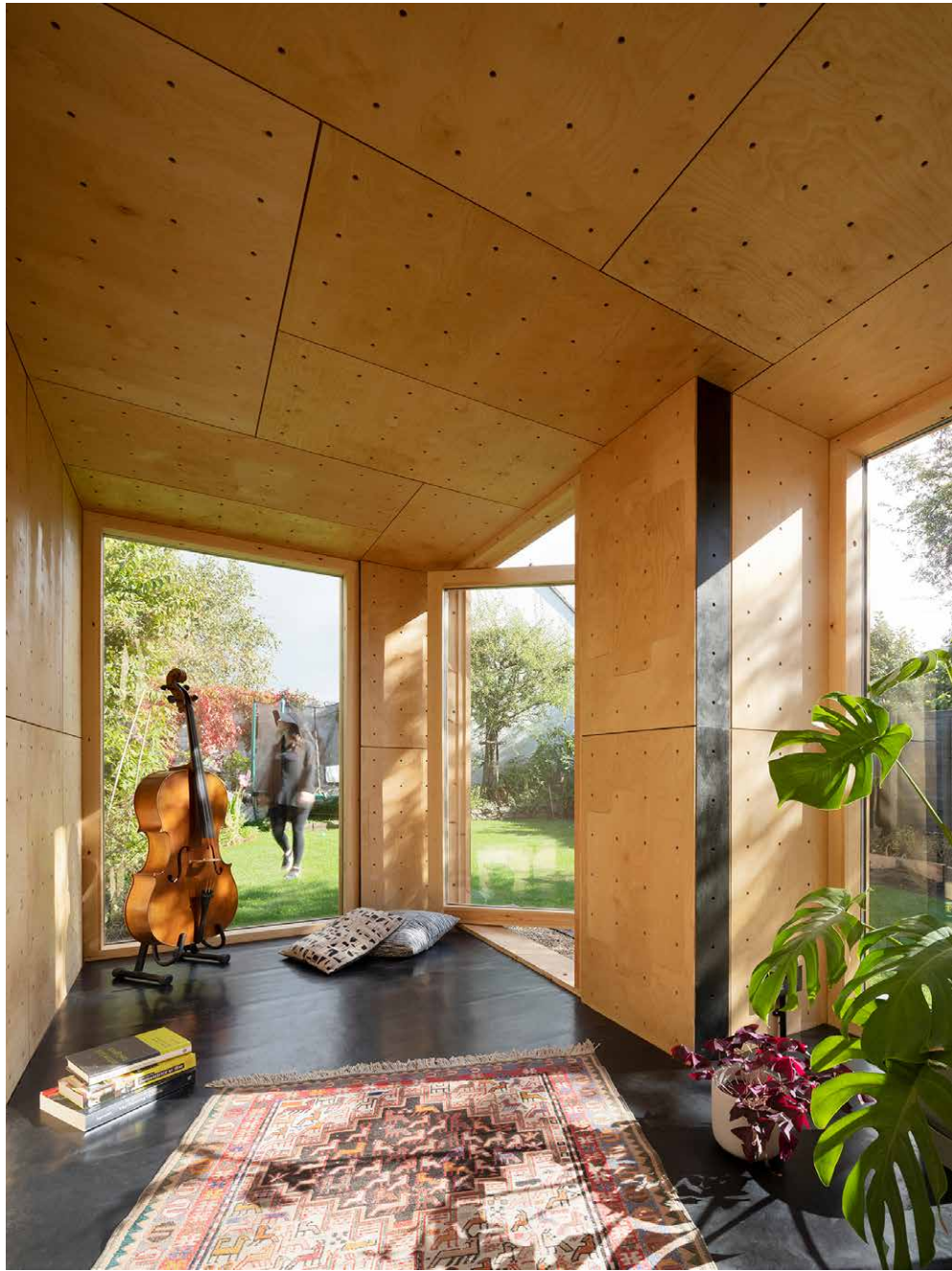
BEAUTIFUL, SUSTAINABLE HOMES

AUAR creates beautiful, sustainable, high-quality homes.

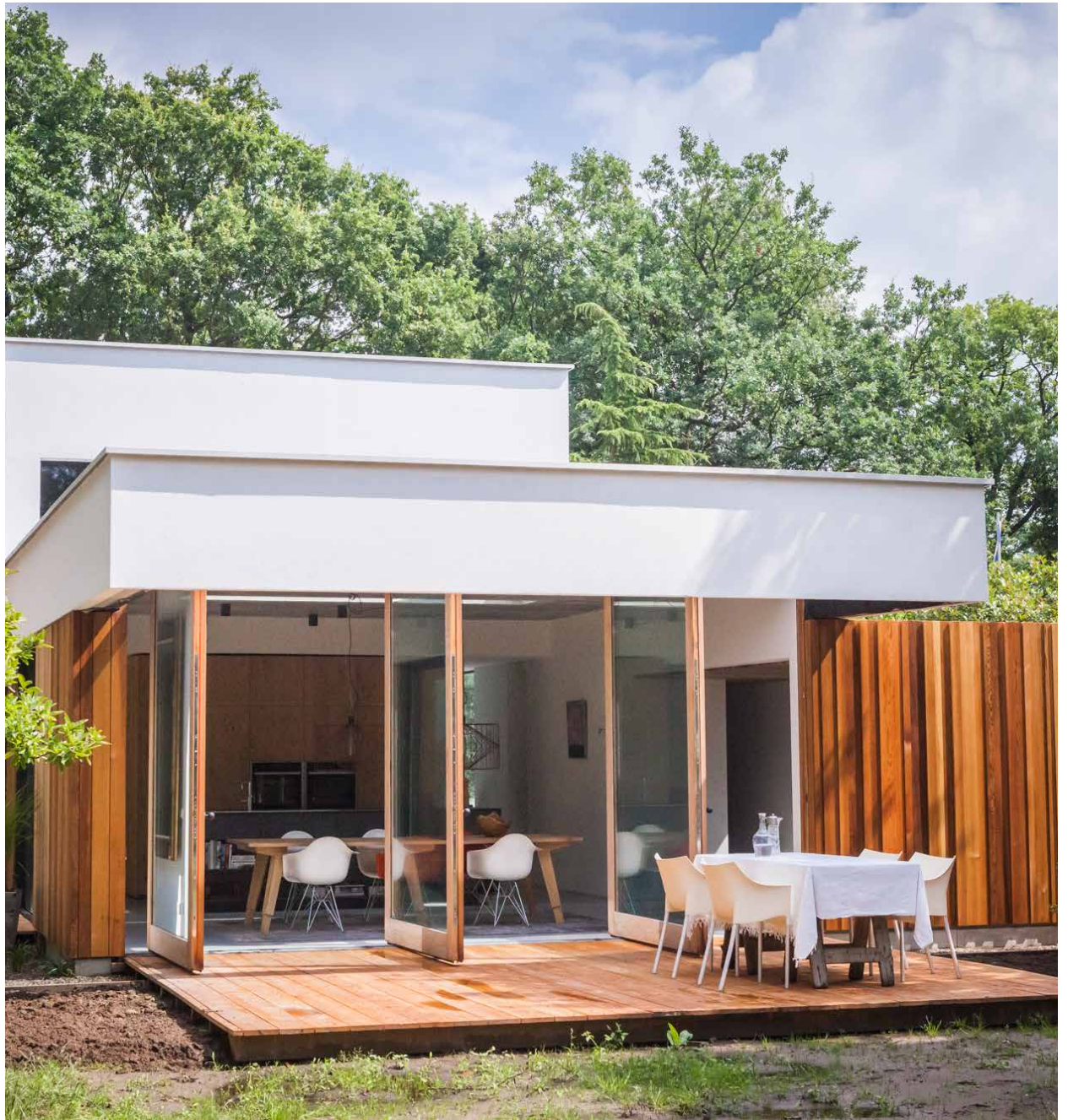
This micro home has a pivoting entrance made of redwood and glass and of 2.1 meters high and 1.5 meters wide. Due to the small space, the large pivot door is optically even larger. The opened door is a natural addition to the spatial impact of the small building.

DESIGNED AND MANUFACTURED BY **AUTOMATED ARCHITECTURE (AUAR)**
PHOTOGRAPHED BY **STUDIO NAARO** FRITSJURGENS SYSTEM **SYSTEM ONE**









PERFECTLY BALANCED INTERIOR

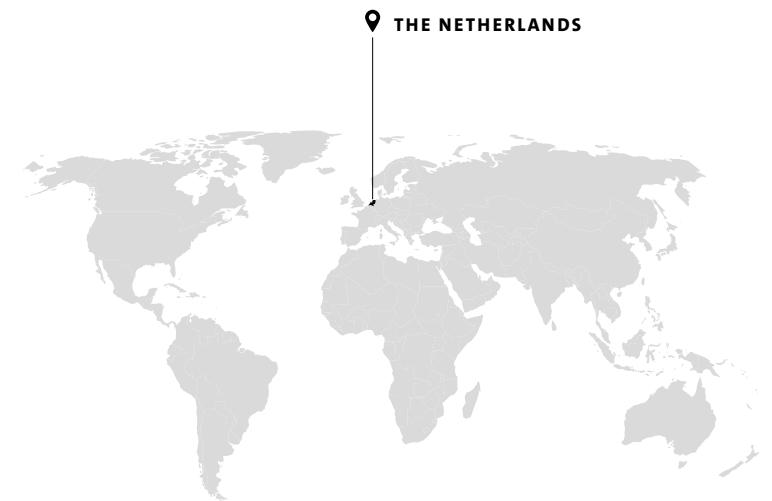
FUNCTION AND FORM UNITED

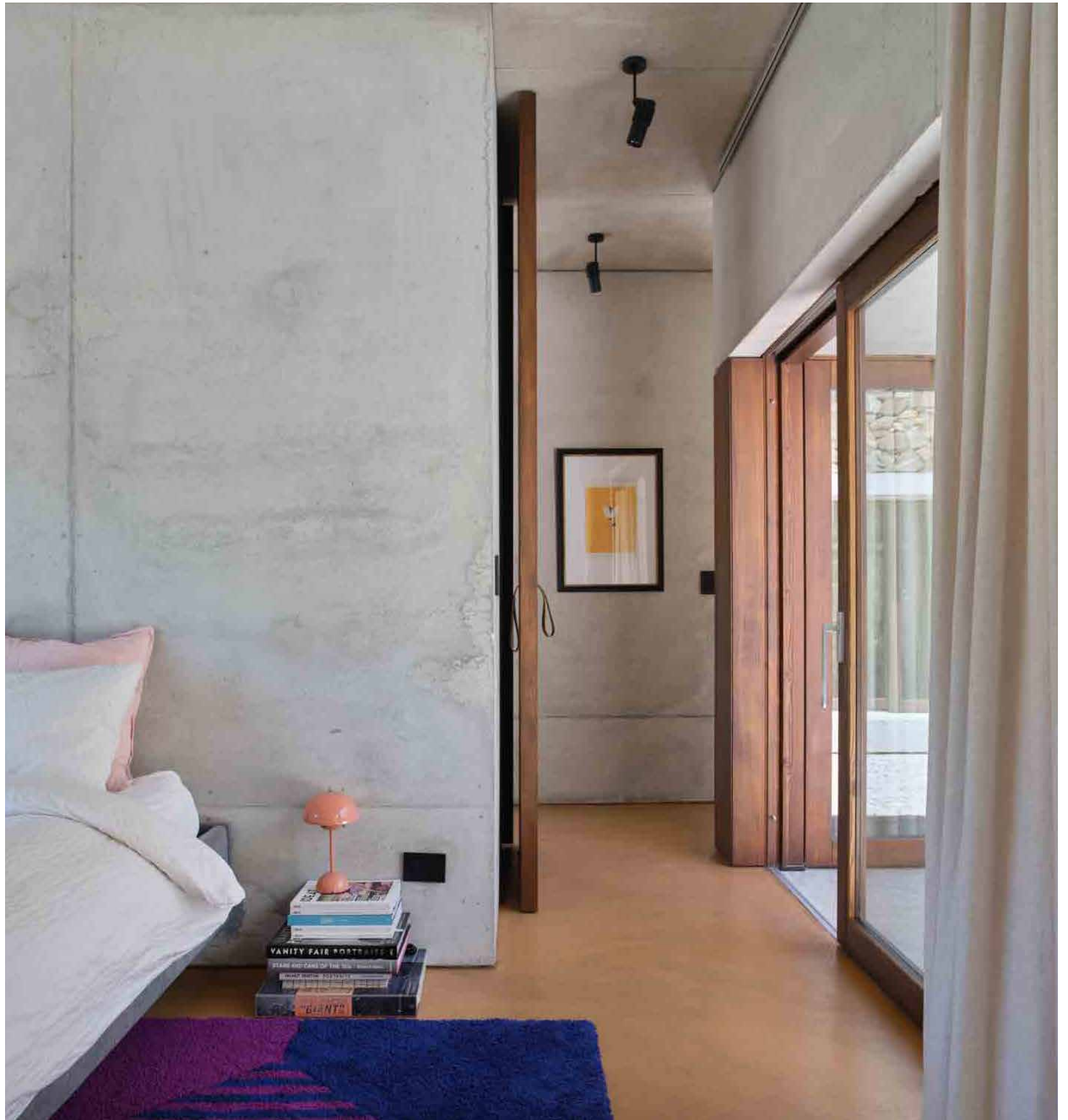
The advantage of pivot doors is that they are both beautiful and functional. This is reflected in this special design by Benerink Architects. This façade consists of three pivot doors, each with a height of three meters and weighing about 300 kg and equipped with wooden frames. When you open them and step outside, you find yourself surrounded by beautiful nature.

ESSENTIAL ELEMENTS

The pivot doors have triple-insulated glass and fit exactly in the canopy. They match the refined design by Benerink Architects perfectly and make the house one whole. These are not just ordinary pivot doors: they are stand-alone elements that really add something to the house but fully blend into the interior at the same time.

DESIGNED BY **BENERINK ARCHITECTEN** MANUFACTURED BY **SPAPEN KOIJNEN**
PHOTOGRAPHED BY **DENNIS BRANDSMA** FRITSJURGENS SYSTEM **SYSTEM ONE**





SOPHISTICATION OF SIMPLICITY

THE WAY OF ITALIAN DESIGN

This beautiful pavilion 'hovers' between the Tuscan hills.

A typical Mediterranean design that fits in elegantly with the beautiful surroundings. Gardini Gibertini Architects based their design on the 'Patio House' and were inspired by the extraordinary landscape. The materials all come from the immediate vicinity – or are a reference to it.

ONE WITH THE MODERN INTERIOR

The project by Gardini Gibertini Architects excels in simplicity.

The house consists of eight blocks, connected with each other by pivot doors. In this design, they literally form the connection between the spaces – both inside and outside the pavilion.

They are subtle yet striking. They are one with the warm, contemporary interior.

DESIGNED BY **GARDINI GIBERTINI ARCHITECTS**

PHOTOGRAPHED BY **EZIO MANCIUCCA** FRITSJURGENS SYSTEM **SYSTEM M+**





RENOVATION WITH PIVOT DOORS

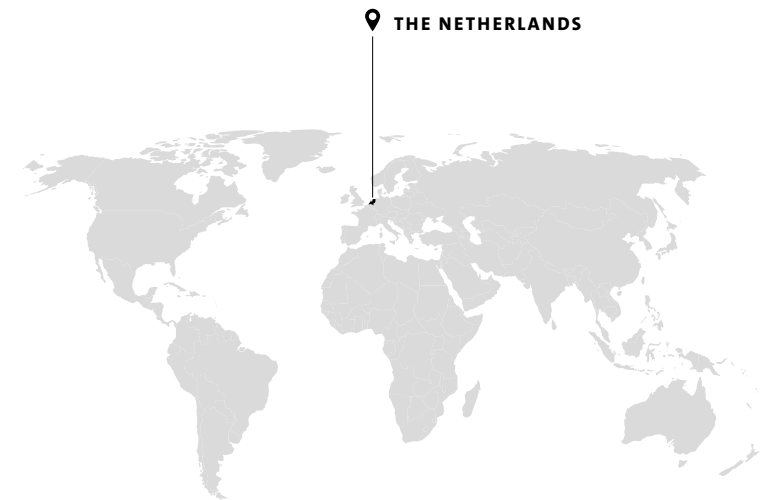
THE POWER OF METAL DESIGN

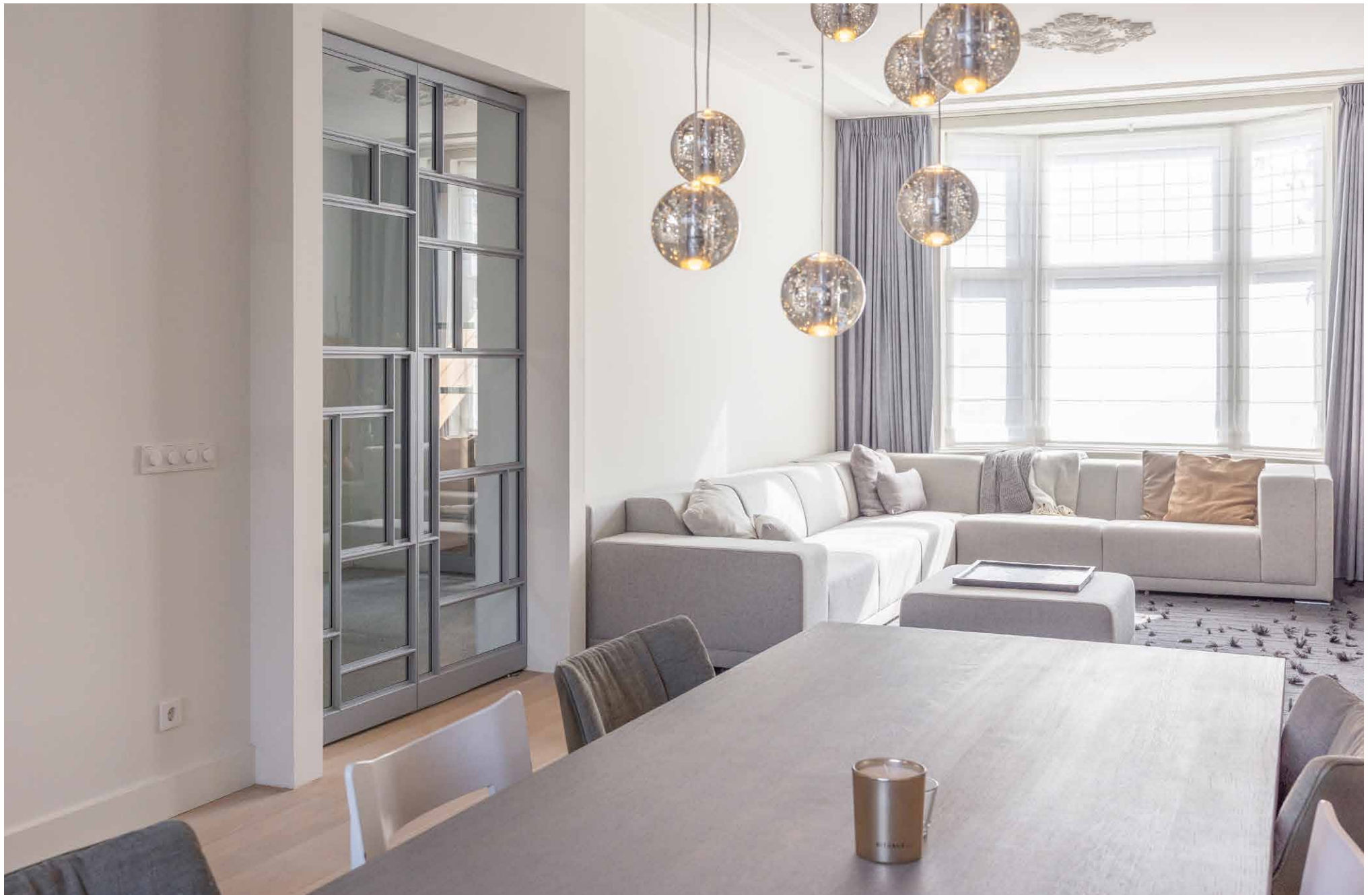
This 19th-century mansion in Utrecht was in need of renovation. With respect for the original structure, interior architect Remy Meijers converted the building into a modern family home. To create a spatial effect, he placed steel pivot doors. Unlike the classic type, these doors have a gray coating and a unique layout.

THE UNIQUE DESIGN BY DE ROOY

Remy Meijers chose De Rooy Metaaldesign pivot doors. The inner doors have a mouse gray powder coating and hidden handles. This way, the unique, tailor-made layout stands out even more. Of course, the self-closing FritsJurgens System M pivot hinges allow for smooth, controlled door movement.

DESIGNED BY **REMY MEIJERS** MANUFACTURED BY **DE ROOY METAALDESIGN**
FRITSJURGENS SYSTEM **SYSTEM M**









CRAFTSMANSHIP AND CREATIVITY

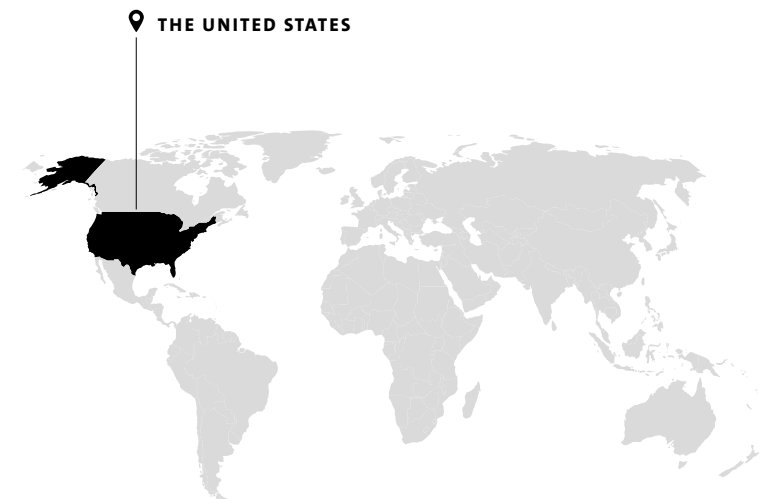
THE STORY BEHIND THE DOOR

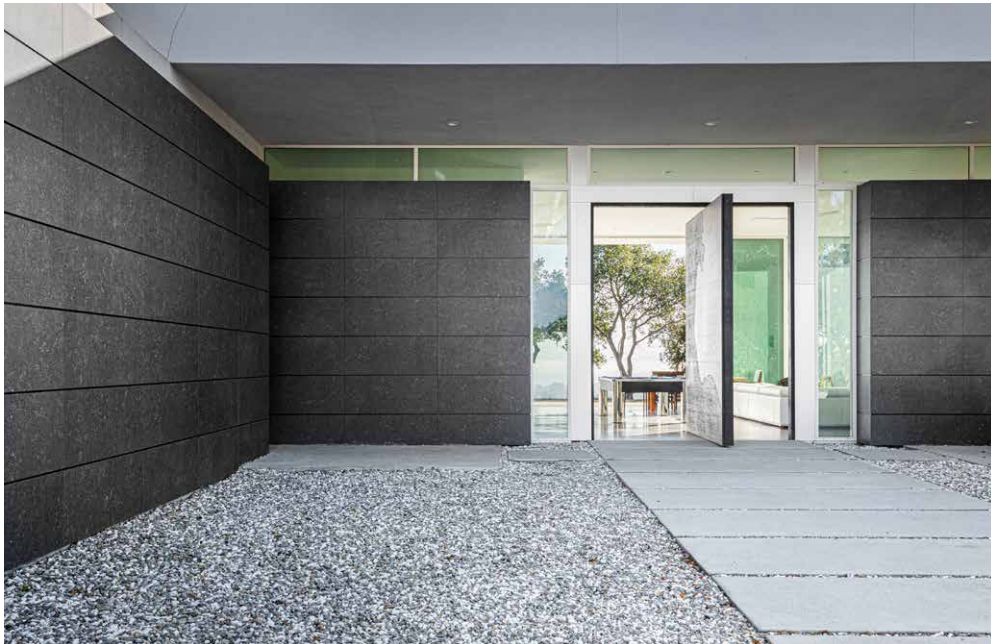
The U.S.-based Fuse Architects and Builders employ a team of top designers, all excelling in craftsmanship and creativity. The firm specializes in progressive, modern architecture, linking their clients' needs, their relationship to design, the natural environment and the neighborhood where they build.

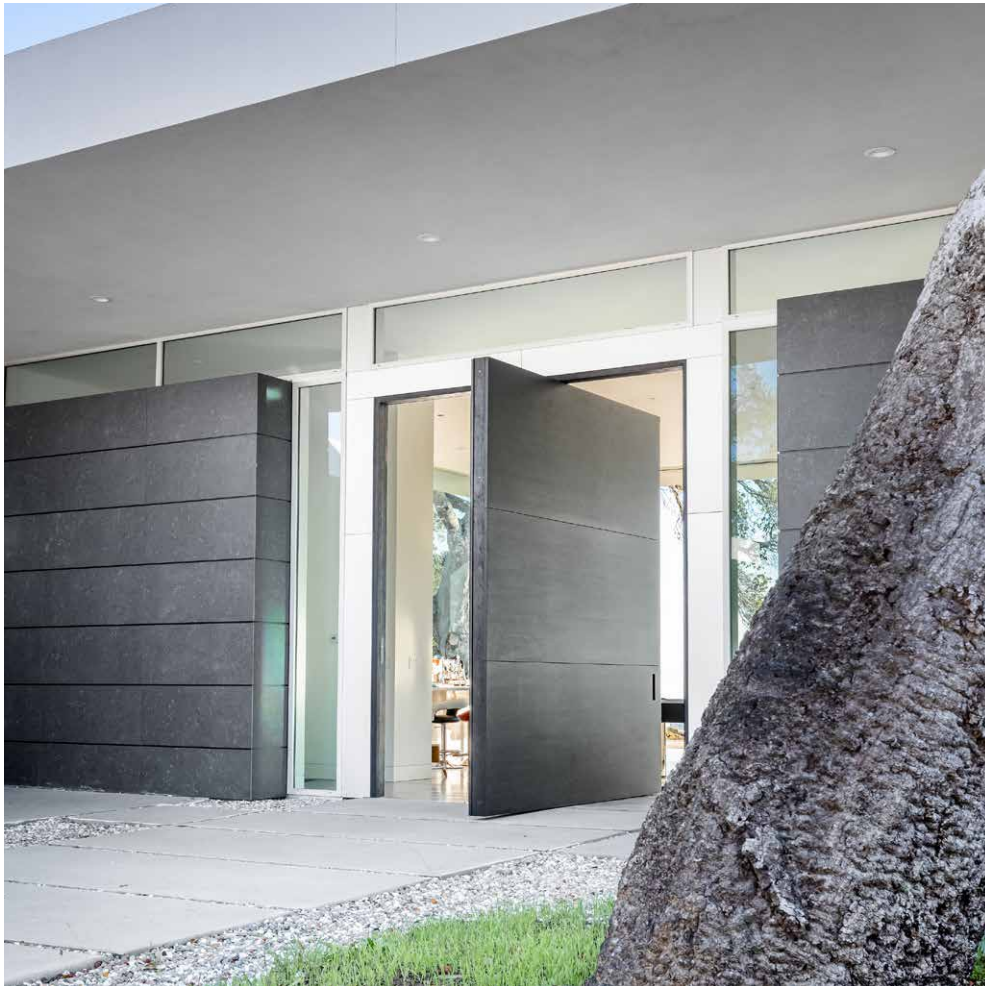
MASTERPIECE IN MONTEREY BAY

The owner of this house in Monterey Bay, California, had one single wish: he wanted to open the front door and the glass wall and have the feeling that he could fly through the house. Both the details and the size of this pivot door are impressive. The combination of creativity, use of materials and refinement makes it a true masterpiece.

DESIGNED BY **FUSE ARCHITECTS AND BUILDERS** MANUFACTURED BY **ARCHITECTURAL MILLWORK AND DESIGN**
PHOTOGRAPHED BY **JESSE BEER** FRITSJURGENS SYSTEM **SYSTEM M**







COMBINATION OF MATERIALS

The basis of the entrance is an aluminum frame with a lightweight honeycomb core, and the outside of the door is made of wire-brushed white oak. These materials form a beautiful combination. Because the door is so heavy, the firm opted for the FritsJurgens pivot hinges. All systems are incorporated inside the door.



DOOR WITH A HAND-MADE MAP

The door depicts a map of Monterey Bay. The map was manually textured with a wire brush. The ocean side of the map is made of polished, stained white oak. The map is a reference to the location of the house: on a hill, overlooking the bay.



APPEALING TO THE IMAGINATION

The house offers a great view of the coast of Monterey Bay. The two different colors and shapes of oak depict the bay in which the residence is located: dark gray for the land, light gray for the ocean. A beautiful and unique interaction with the natural environment, which is exactly what sets Fuse Architects and Builders apart.

The map on the door gives an idea of the view behind the door. But only when you open it, you can truly grasp how impressive the bay is. A gold-inlaid marking at the bottom of the door connects the design with the natural environment that tells the story on its own. It's no wonder that Fuse Architects and Builders call the door a moving work of art.





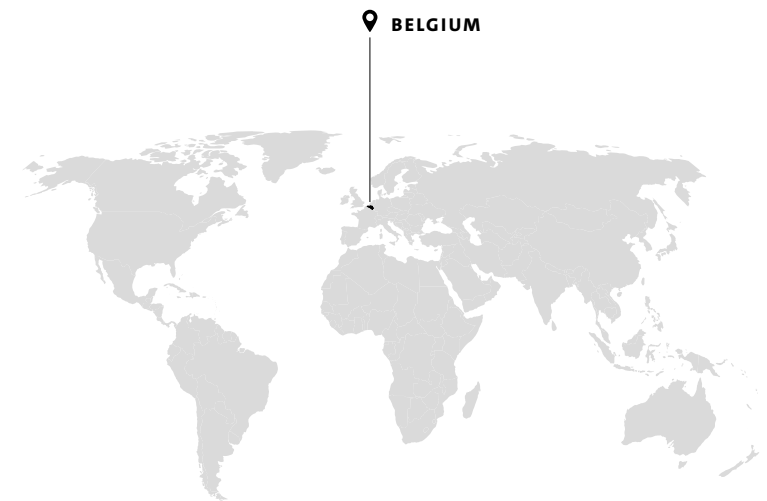
RENOVATION AT THE FLEMISH KMSKA

HIDDEN AUTONOMOUS ENTITY

After having won a major international competition in 2003, the Dutch firm of KAAAN Architecten worked intensively on its master plan: the renovation and extension of the Royal Museum of Fine Arts Antwerp. The KMSKA is one of the last remaining examples of the city's neoclassical architecture and is, therefore, of great value.

HIDDEN WITHIN THE HISTORIC BUILDING

KAAAN Architecten designed a new, 21st-century wing that is 'hidden' within the museum. The new wing is where the old courtyard gardens used to be and cannot be seen from the street. This way, it forms an autonomous entity. Via a monumental staircase, the entrance, the reception hall and the Keyserzaal, visitors are guided to the new wing.



DESIGNED BY **KAAAN ARCHITECTEN**

PHOTOGRAPHED BY **SEBASTIAN VAN DAMME** FRITSJURGENS SYSTEM **SYSTEM ONE**





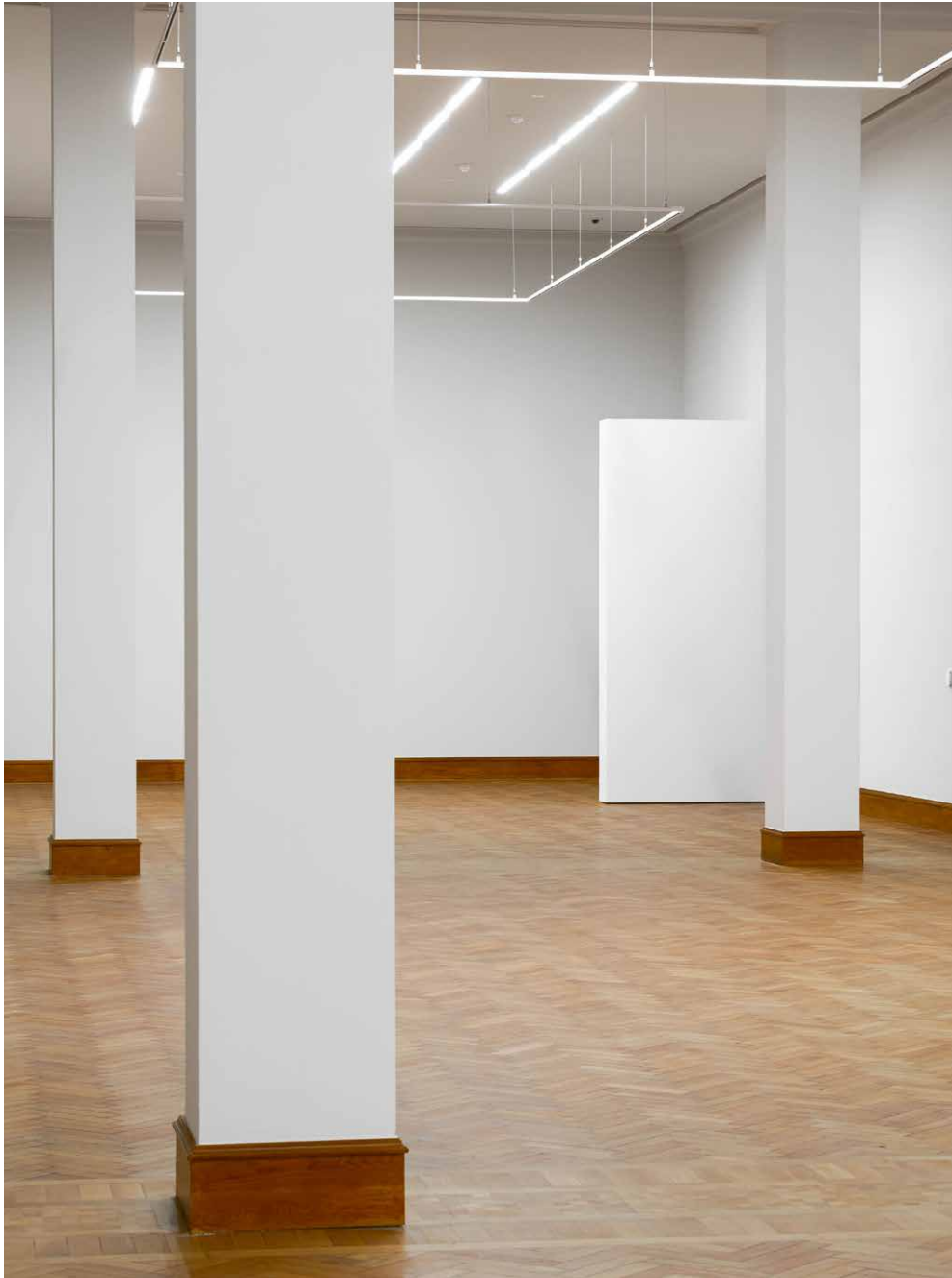
DAZZLING EXHIBITION ROOMS

The white exhibition rooms in the new wing are to ensure a dazzling experience, just like the high-gloss floors and the triangular, three-dimensional roof lights. The abstract design, the sleek details, and the white and night-blue colors form a strong contrast with the old KMSKA building.



TWENTY-FIVE HIDDEN DOORS

Twenty-five pivot doors can be found throughout the museum – each more hidden than the next one. They are dotted all over the building and form an important part of the building's material identity. They are practically invisible and concealed inconspicuously into the walls.



A TRUE EXPERIENCE IN THE KMSKA

Pivot hinges not only offer the possibility of making doors invisible, but also of huge dimensions. On the first floor, there is a pivoting wall as big as 5.5 by 9 meters, which has greatly improved the logistics surrounding the large works of art. The pivoting monumental doors are a special detail in the museum.

The abstract, contemporary design of the new wing strongly differs from the style of the historic building. The sleek details are in strong contrast with the neoclassical architecture. This makes a visit to the museum a true experience. The design of the renewed KMSKA is overwhelming and simple at the same time. A true architectural masterpiece.





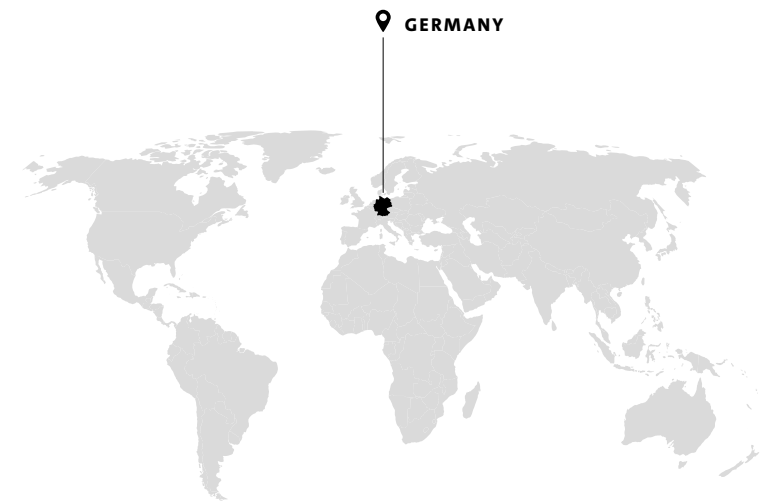
THREE OAKWOOD PIVOT DOORS

STYLISH YET HOMELY LIVING

The Austrian architect Laurenz Vogel designed the interior and exterior of this villa, situated in the hills near Karlsruhe. His love for natural materials can be seen throughout the house, for example in the three oakwood pivot doors that he designed for this project. The light that they allow in brings the house and the wooded surroundings together.

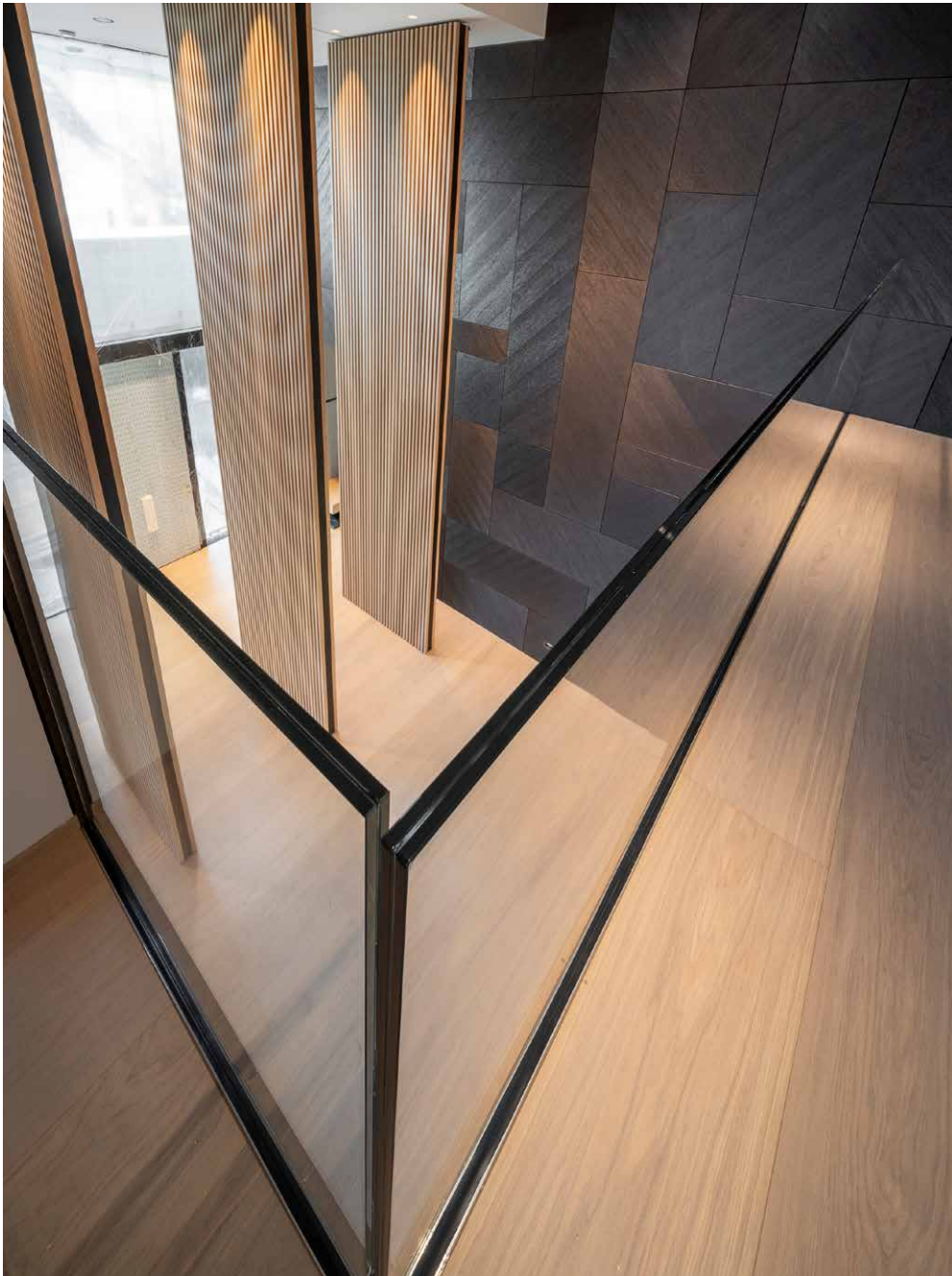
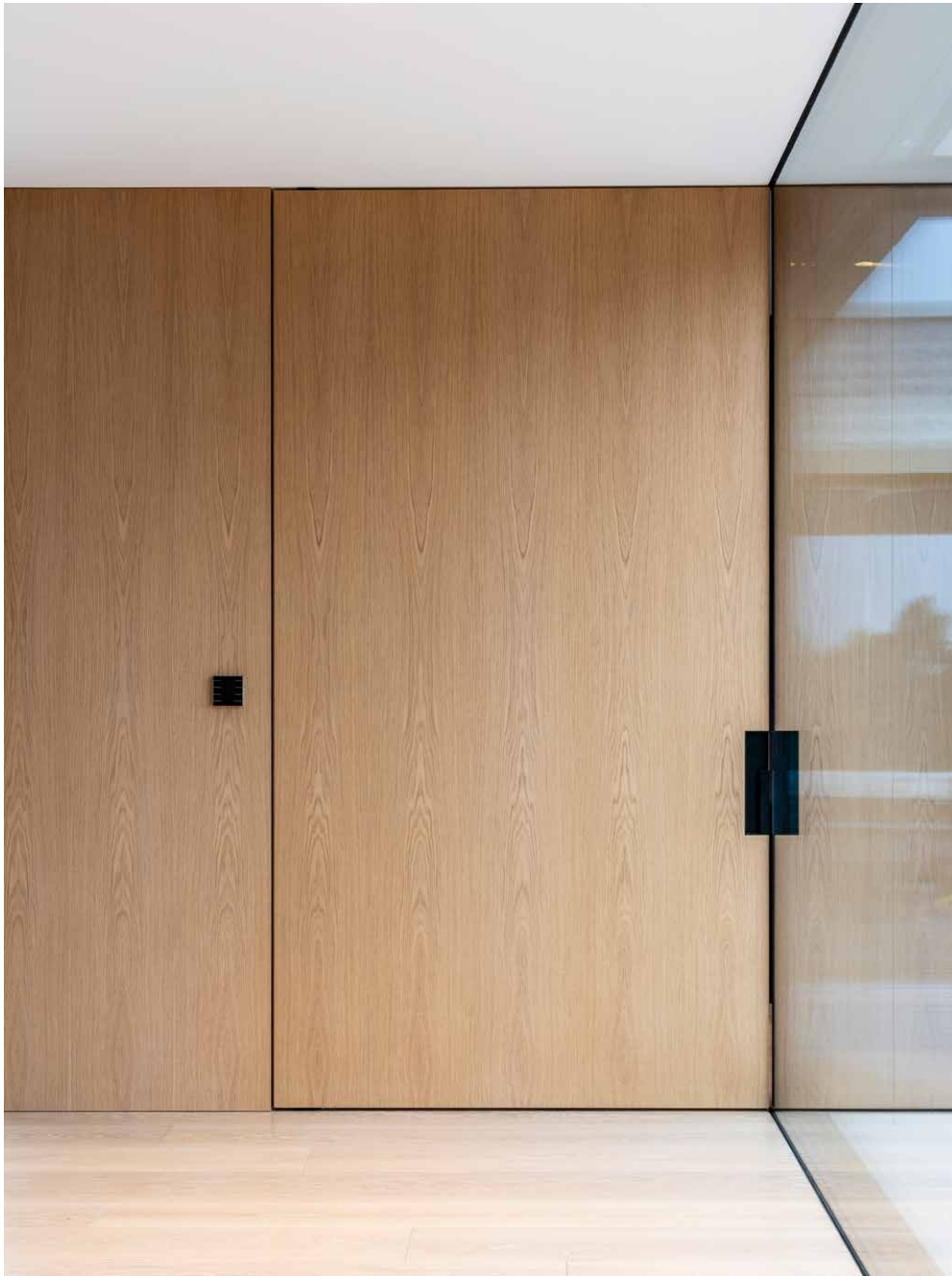
HOME ON THE EDGE OF THE FOREST

The villa borders on the forest and has five floors. The different materials used inside and outside create a playful effect. Vogel uses a great deal of glass in his design, incorporating the surrounding nature into the house. The oakwood pivot doors, for which he used FritsJurgens System 3, make the design extra stylish.



DESIGNED BY **LAURENZ VOGEL ARCHITEKTEN** MANUFACTURED BY **MTB SCHREINEREI GMBH**
PHOTOGRAPHED BY **CHRISTIAN BUCK** FRITSJURGENS SYSTEM **SYSTEM 3**







NEW DESIGN FOR CASTLECrag HOUSE

COPPER PIVOT ENTRANCE

Porebski Architects transformed this post-war house into a modern villa that is sheltered by the surrounding garden.

A striking detail is the entrance to the house: a copper pivot door of impressive size, hidden from street view. Thanks to FritsJurgens System M pivot hinges, the door is smooth and light to use, despite its weight and size.

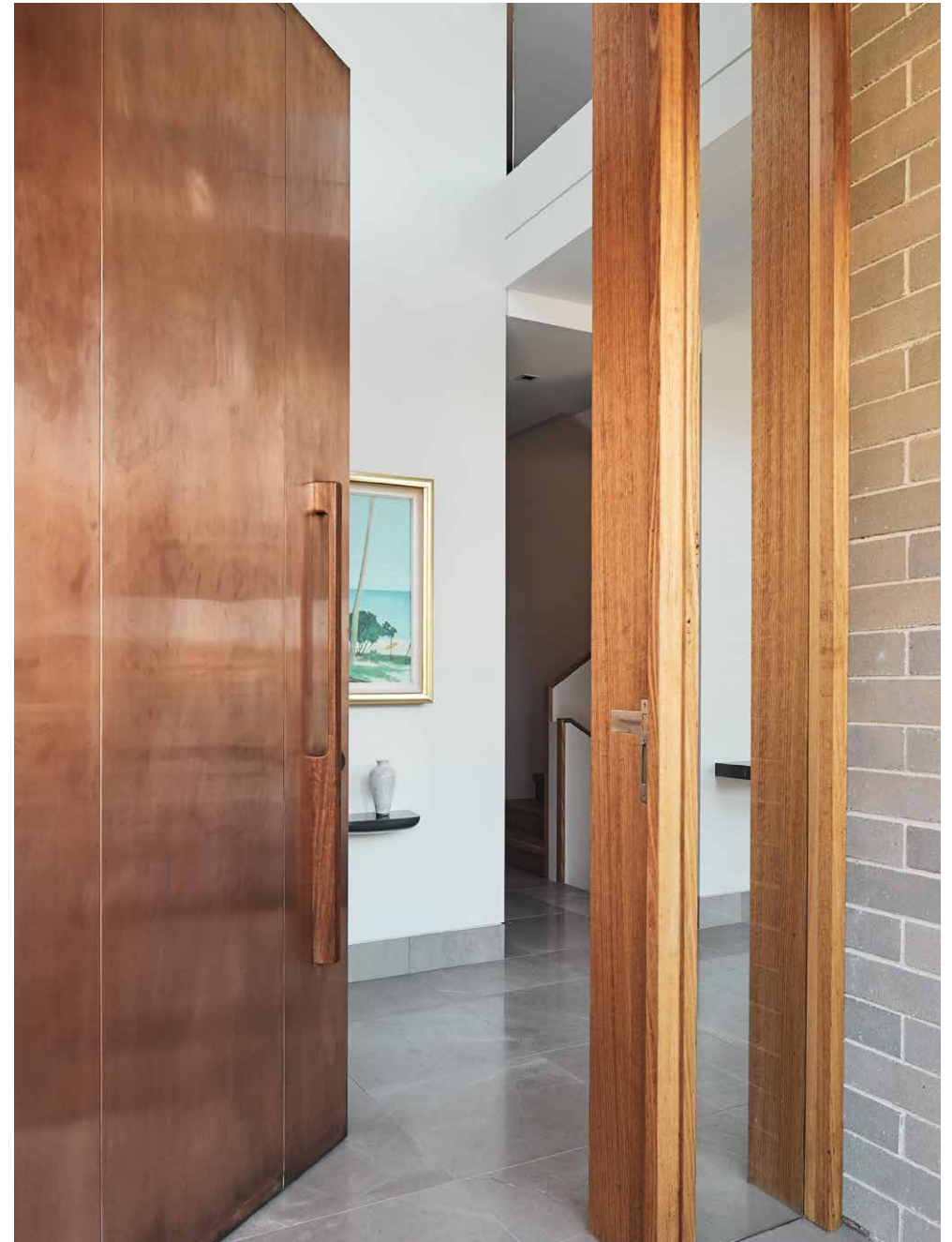
SURPRISING CHOICE OF MATERIAL

The extraordinary pivot door is at the end of a sheltered pathway towards the entrance, forming the connection between the exterior and the interior of the house. Porebski Architects proves that a door can be more than just a passageway: in Castlecrag House it is a must-see, not in the least because of the surprising choice of material.

DESIGNED BY **POREBSKI ARCHITECTS** MANUFACTURED BY **CUMBERLAND BUILDING**
PHOTOGRAPHED BY **PETER BENNETTS** FRITSJURGENS SYSTEM **SYSTEM M**









DOUBLE PIVOT DOORS BY AIR-LUX

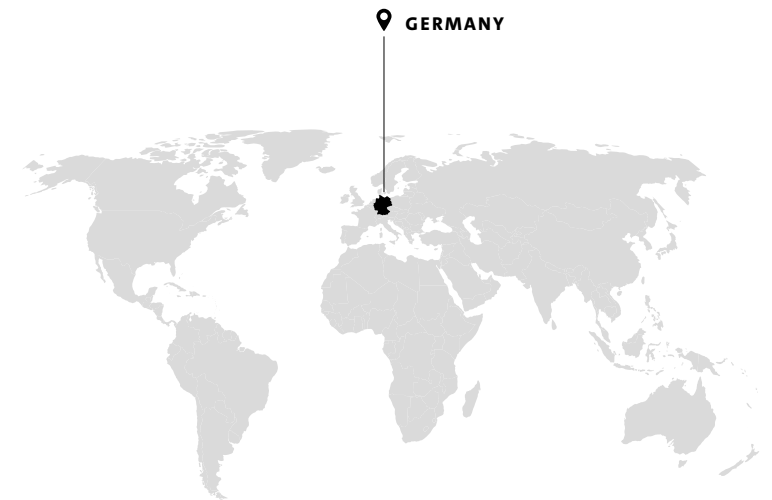
HISTORIC BUILDING REDESIGNED

This monumental building in the German city of Lübeck was built in 1938 based on a design by the renowned architect Fritz Höger. In 2021, the new owner decided that it was time for a modern twist without impairing the historical character of his home. His wish? A space that strengthens the connection between the dwelling and the surrounding park.

BRING NATURE INTO YOUR HOME

The glass double pivot doors by the Switzerland-based air-lux make this dream come true. By placing two doors next to each other, you create an entire moving wall. The glass ensures that the room is generously illuminated. When the doors are closed, you have a superb view of the quiet city park. And when you open them, you step right into nature.

DESIGNED BY **DIPL. ING. STEFAN BRUNS** MANUFACTURED BY **AIR-LUX**
PHOTOGRAPHED BY **EL-JARAD** FRITSJURGENS SYSTEM **SYSTEM M+**





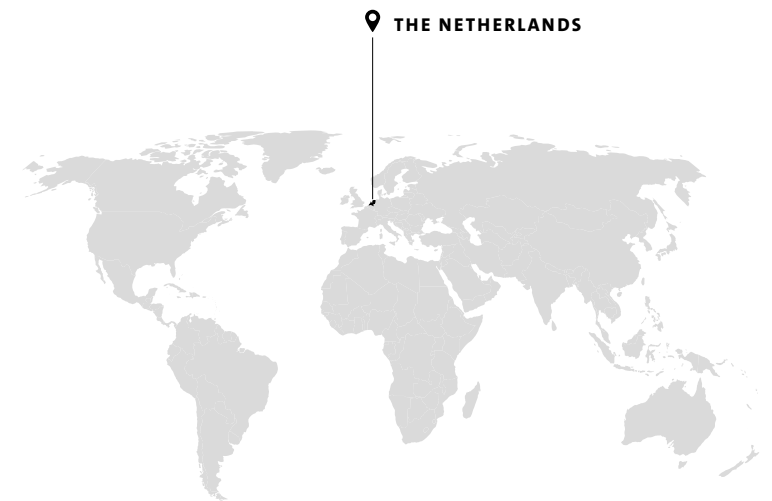
NEW DESIGN FOR FRITSJURGENS

A COMFORTABLE WORKPLACE

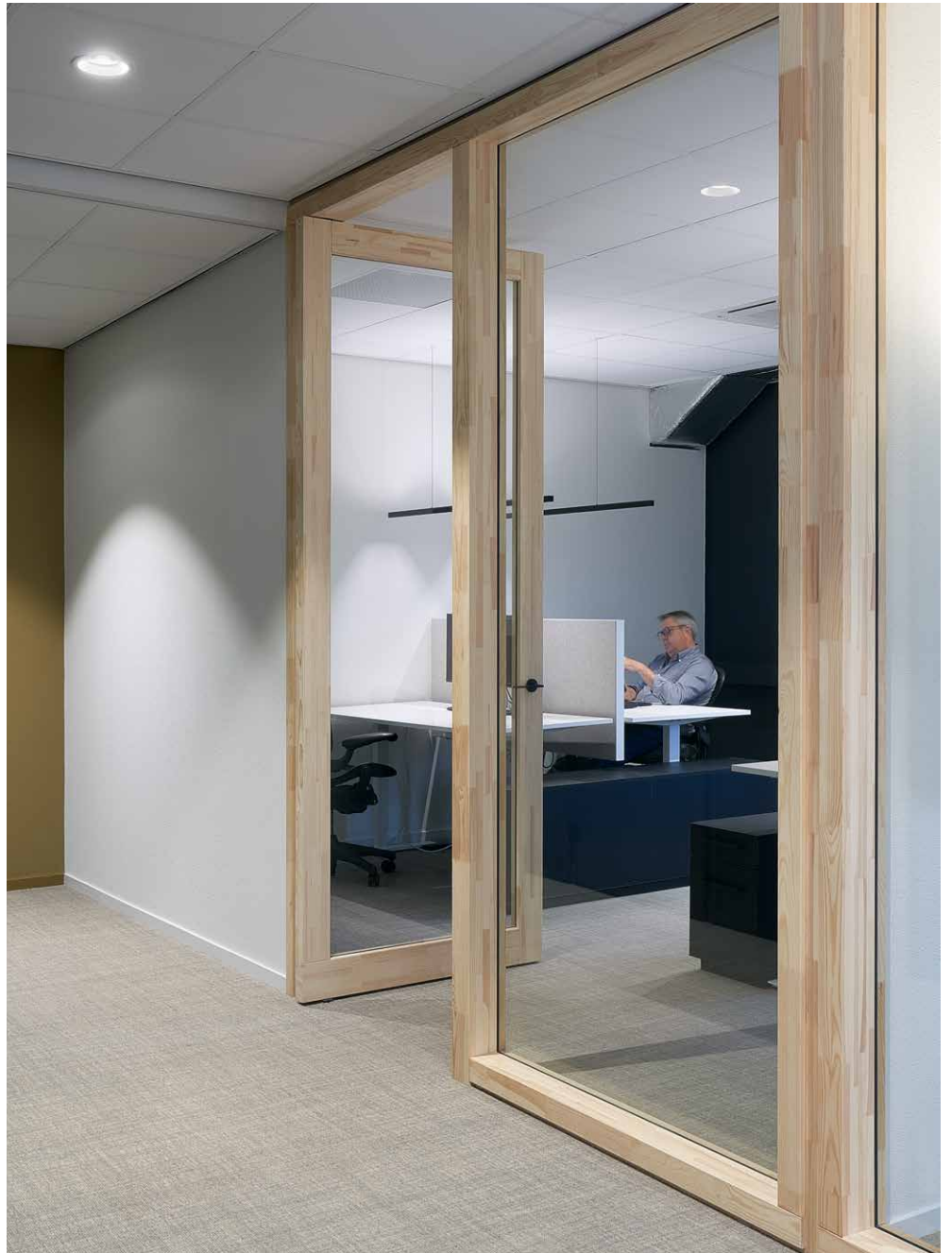
Interior designer Marjan Bulder designed the interior of FritsJurgens head office in Kolham, Groningen. With her design, she created openness, calm, and space. She made our office into a comfortable, modern place to work. She did so, among other things, by placing pivot doors on all the floors, in all shapes and sizes.

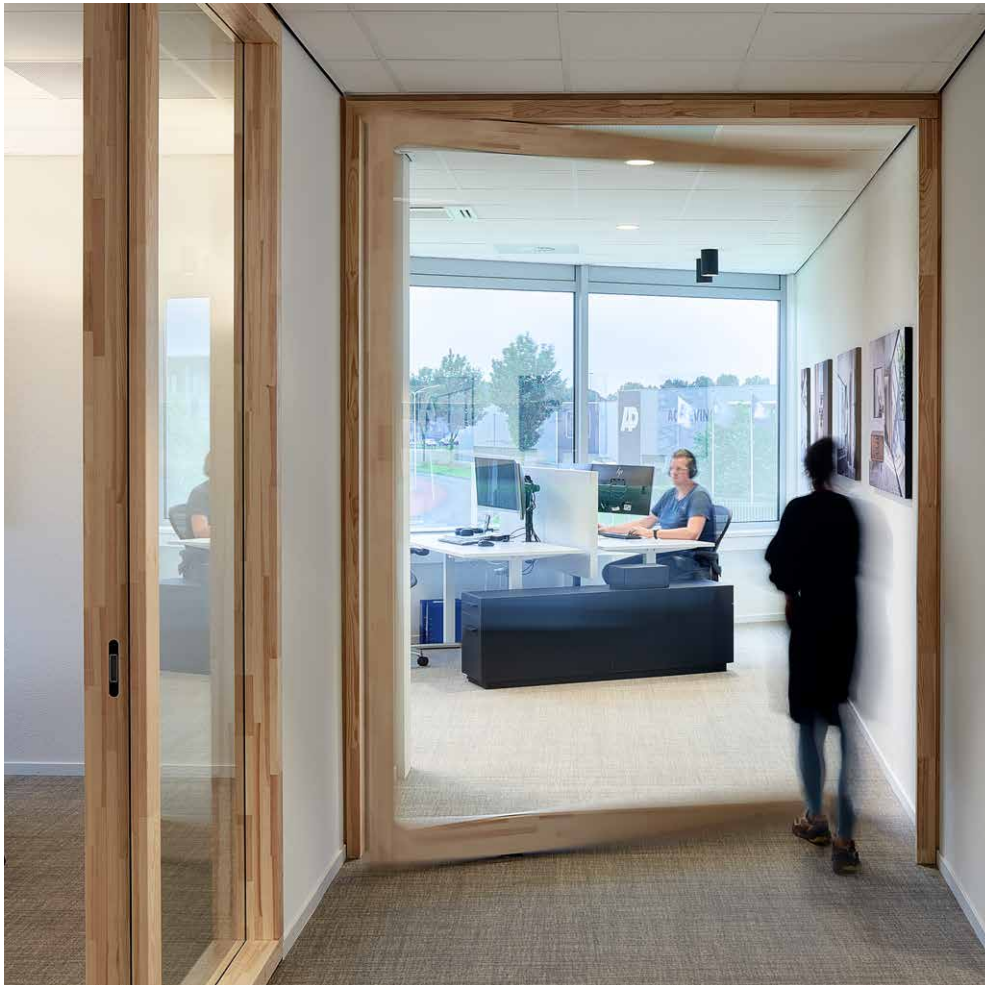
GLASS AND WOODEN PIVOT DOORS

Glass and steel pivot doors, wood-clad pivot doors and print-covered pivot doors – in our office you find them all. They are not only very beautiful; they are also very functional. They separate the entrance hall from the kitchen, and from the large table where our colleagues have meetings, calls, and breaks.



DESIGNED BY **BULDER INTERIEURARCHITECT** MANUFACTURED BY **DE ROOY METAALDESIGN**
PHOTOGRAPHED BY **GERARD VAN BEEK** FRITSJURGENS SYSTEM **SYSTEM M AND SYSTEM ONE**





MORE OPENNESS, CALM, AND SPACE

On the first floor, Marjan Bulder placed six wood-framed pivot doors. Three of them are part of a glass wall, where there used to be an ordinary one. Quite an improvement: the glass makes the space feel much larger. More light is allowed in, which creates more openness.



SMART 'HIDDEN' DOOR

Thanks to the minimal space needed around the pivot door, you can cleverly conceal that there is a door at all. There are various ways to do this – for example by using 'jib doors'. In our head office, two toilet doors are concealed in the surrounding wall: both clad and perfectly aligned.



A PRINT-COVERED PIVOT DOOR

As you can see, you can do anything with a pivot door, the options are endless. For example, you can decorate it with an enlarged, printed photo. The door of one of our offices is decorated with a large image of Frits Jurgens, our namesake. To us, he is a real inspiration, and this way we are reminded of him every day.

Pivot doors contribute directly to an inspiring and inviting work environment. Particularly in these times of hybrid working, this is extremely important. Working from home is possible, but the office is the place where meetings take place and where creativity blossoms. A fresh working environment with pivot doors directly contributes to that inspirational atmosphere.





LARGE GLASS AND STEEL DESIGN

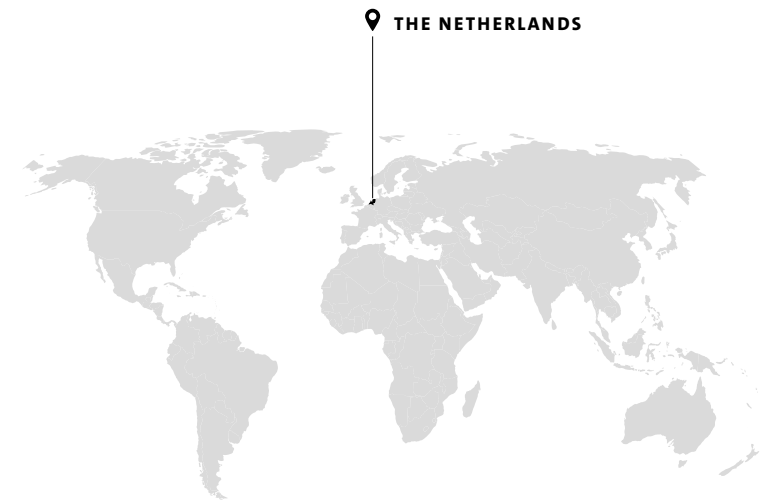
THE IDEAL PIVOT HINGE

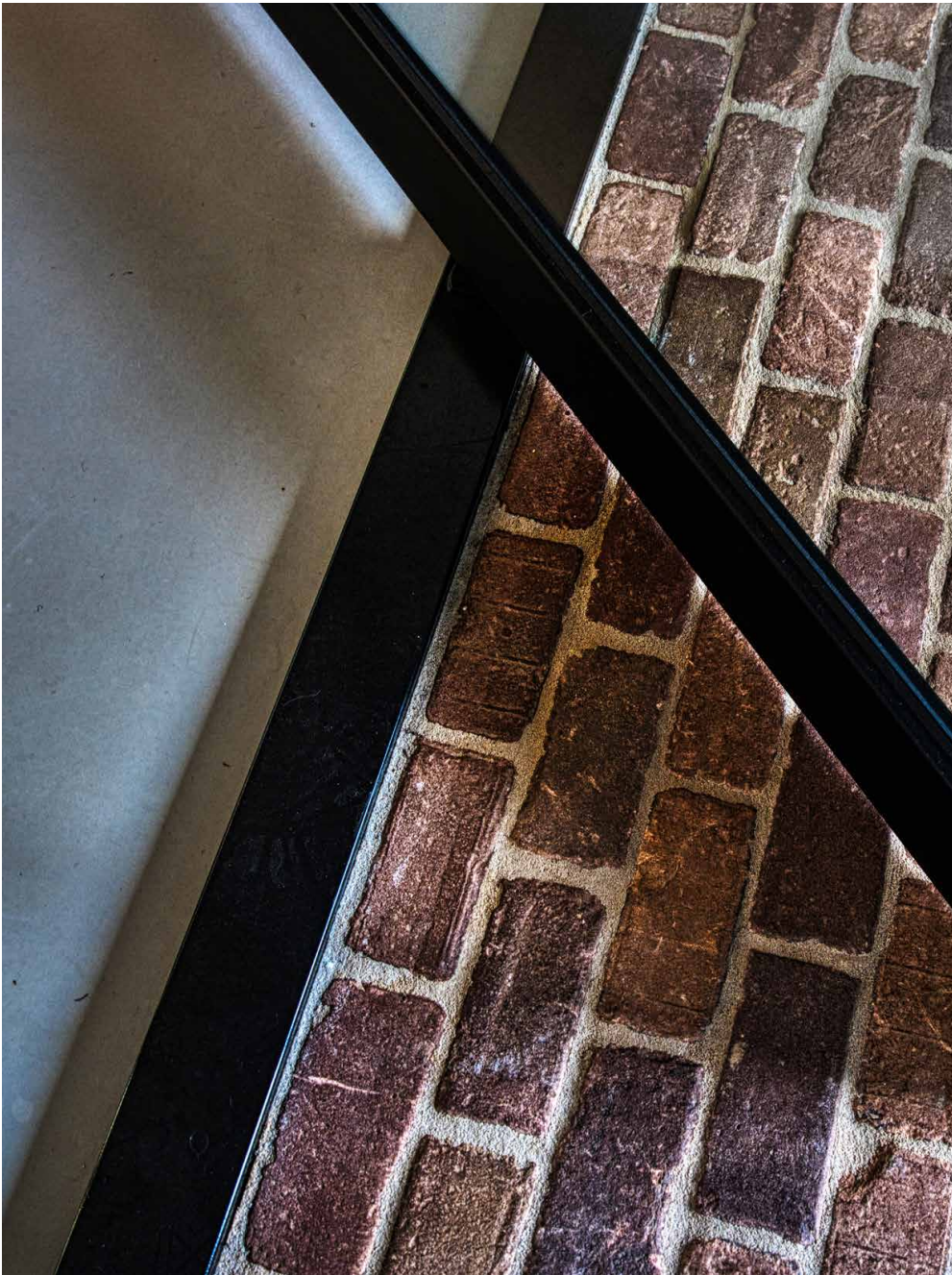
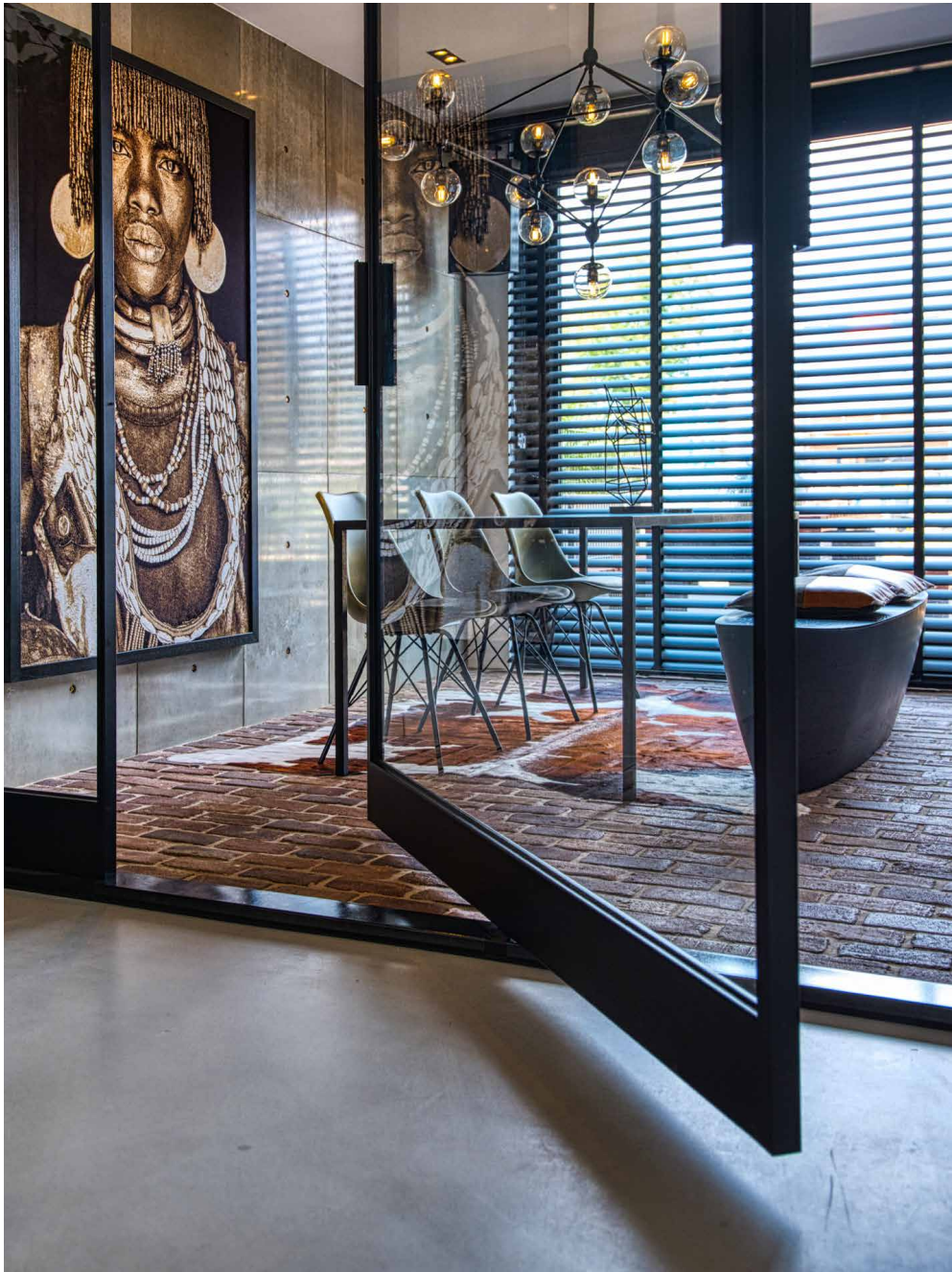
Steel pivot doors can be very heavy, particularly in large designs with lots of glass. Fortunately, FritsJurgens pivot hinges are suitable for doors up to as much as 500 kg. Take, for instance, this special design of steel and glass. The steel of this door is finished with a powder coating. The glass is given an extra dimension by adding works of art.

ELEGANCE TO A TEE

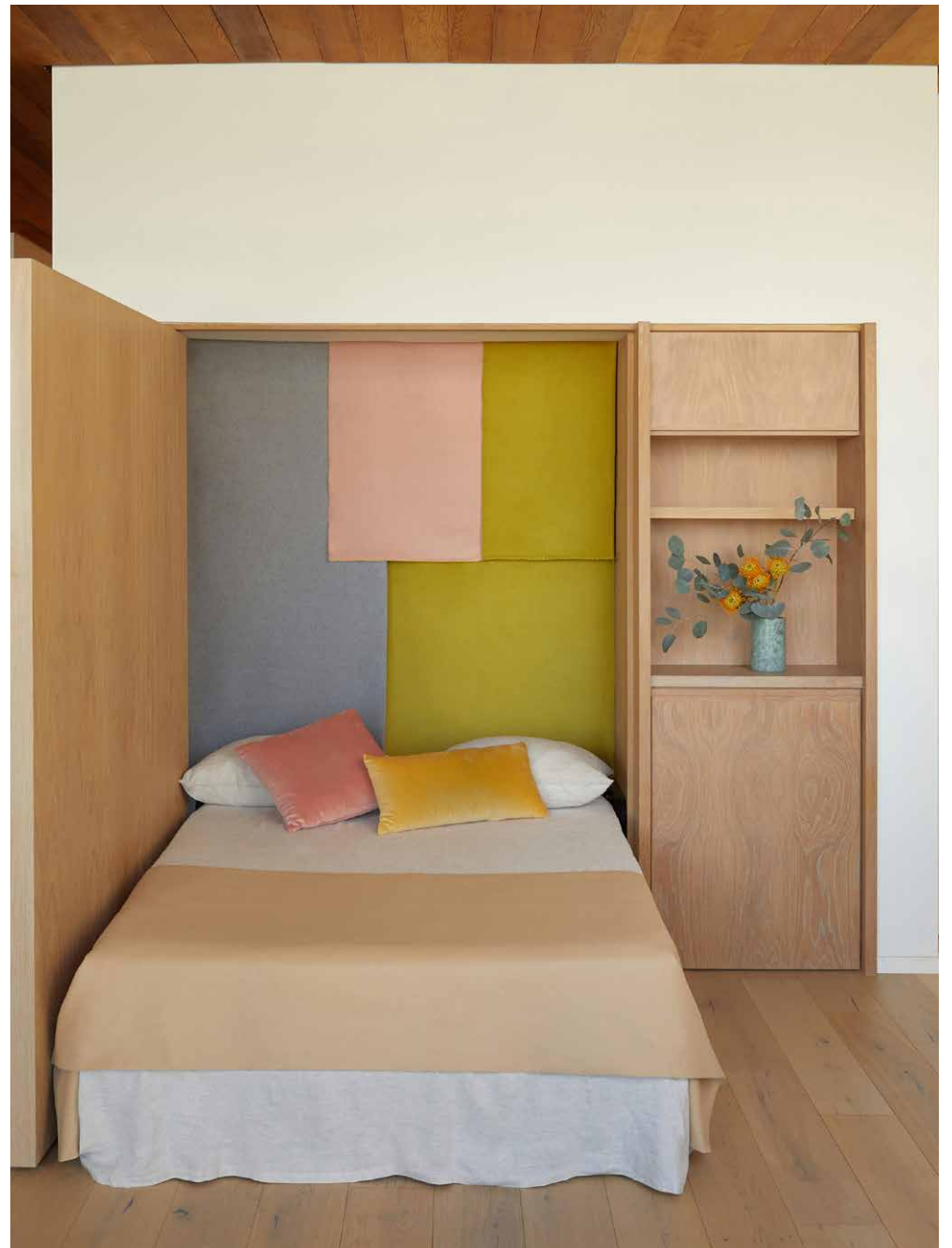
Glass doors are elegant, particularly when FritsJurgens pivot hinges are used. They make it possible to open and close the door in a single smooth movement. Moreover, our pivot hinges are hidden inside the door, so that only the floor and ceiling plates are visible. This way, the 'hidden' door smoothly blends into the interior, without ever being a distraction.

DESIGNED BY **MOOD CREATIONS** MANUFACTURED BY **THUIS IN STAAL**
PHOTOGRAPHED BY **DIRK-JAN POOT** FRITSJURGENS SYSTEM **SYSTEM 3**









MORE SPACE THROUGH SMART DESIGN

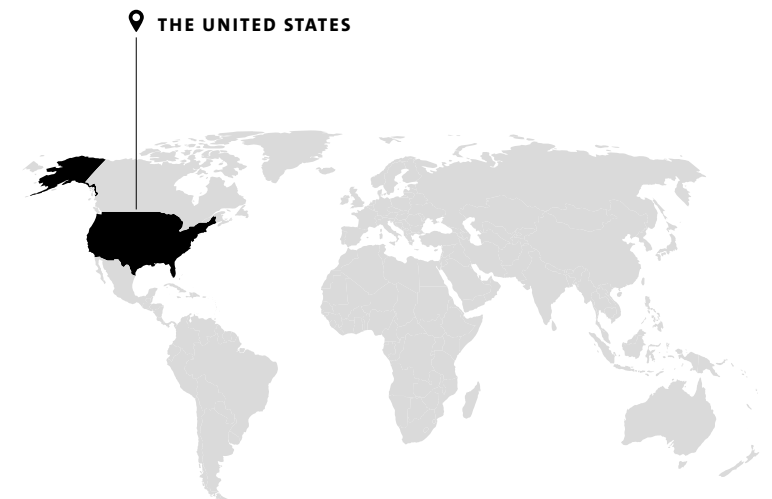
BED, CABINET, AND DOOR IN ONE

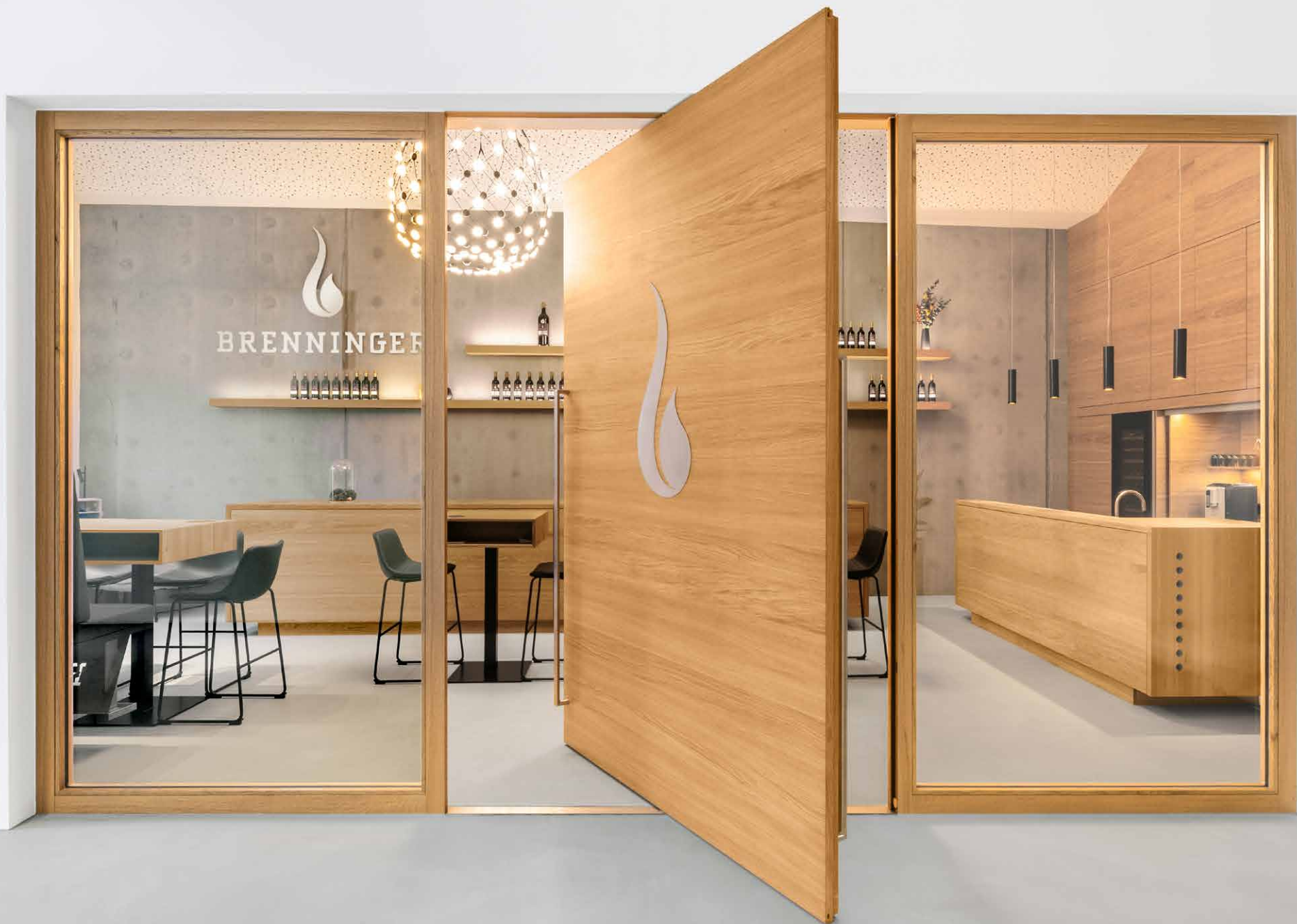
The U.S.-based architecture and design office Nabi Boyd designed a pivot door with FritsJurgens hinges. The door also functions as a cabinet and was made by MANEUVERWORK. Behind the door, a foldaway bed is hidden. In case of overnight guests, the pivot door offers extra privacy. An extra sleeping place, without having a guest room.

COMPACT, FRESH DESIGN

This pivot door is equipped with FritsJurgens System One: an ideal solution because of its simplicity. System One is a handy system that is hidden inside the door – just like our other hinges. With its load-bearing capacity of up to 500 kg, the possibilities are endless. Therefore, it is perfect for this compact design by Nabi Boyd.

DESIGNED BY **NABI BOYD** MANUFACTURED BY **MANEUVERWORKS**
PHOTOGRAPHED BY **CODY JAMES** FRITSJURGENS SYSTEM **SYSTEM ONE**





NEW INTERIOR FOR WINERY

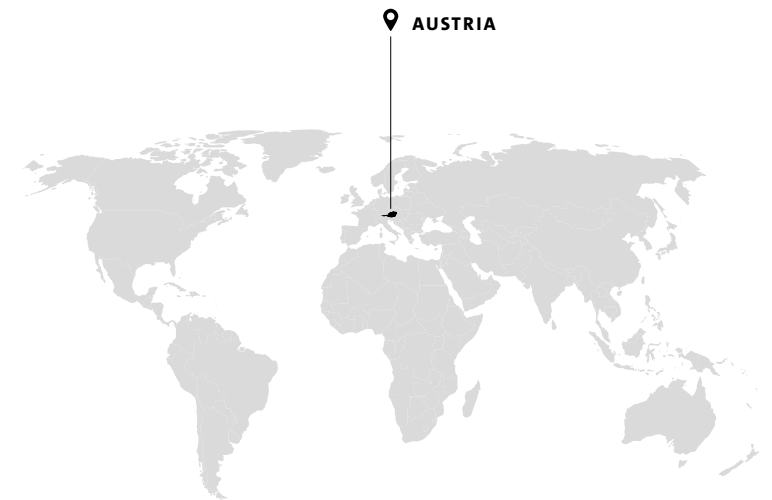
LOVE FOR DESIGN

Pöchacker & Haidegger is a furniture manufacturer in Diendorf, Austria. Ever since 1987, this family business has manufactured tailor-made furniture for homes, the catering sector and stores. The designers love their profession and see each new project as a true work of art. They were responsible for the design of the interior of the 'Weingut Andreas' winery in Brenninger.

GLASS AND WOODEN PIVOT DOOR

Guests now enter the workshop via the two wood-framed glass pivot doors. In addition, there are two pivot doors that lead to the place where the wine barrels are. For the large door, the firm opted for our System 3 pivot hinges, which can rotate 360 degrees. The pivot doors fit the wooden interior of the winery perfectly.

MANUFACTURED BY **PÖCHACKER & HAIDEGGER GES.M.B.H.**
PHOTOGRAPHED BY **THOMAS SIEBERER** FRITSJURGENS SYSTEM **SYSTEM 3**









ROOM DIVIDER TO WINE CABINET

SHOWPIECE IN THE HALL

In the original design, a room divider would be placed where the wine cabinet now stands. That way, the cozy sitting area would be separated from the hall. The door makers of Pjokke Dutch Design also realized two double glass steel pivot doors in the house.

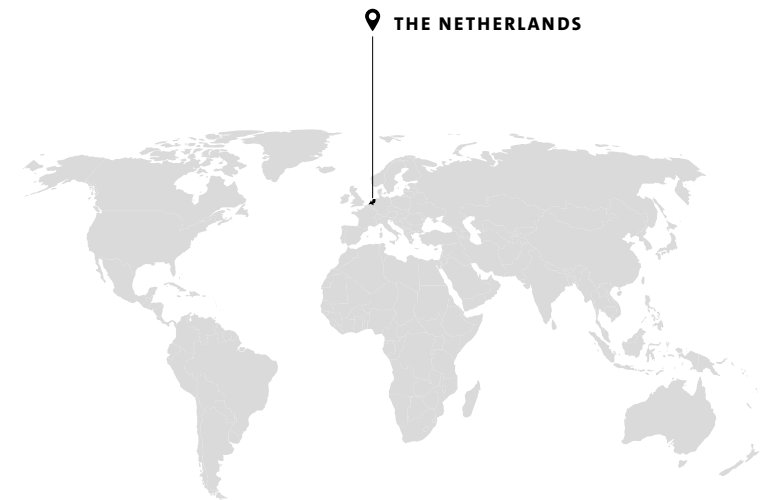
Together with the residents, they came up with the idea of a wine cabinet – naturally while enjoying a good glass of wine.

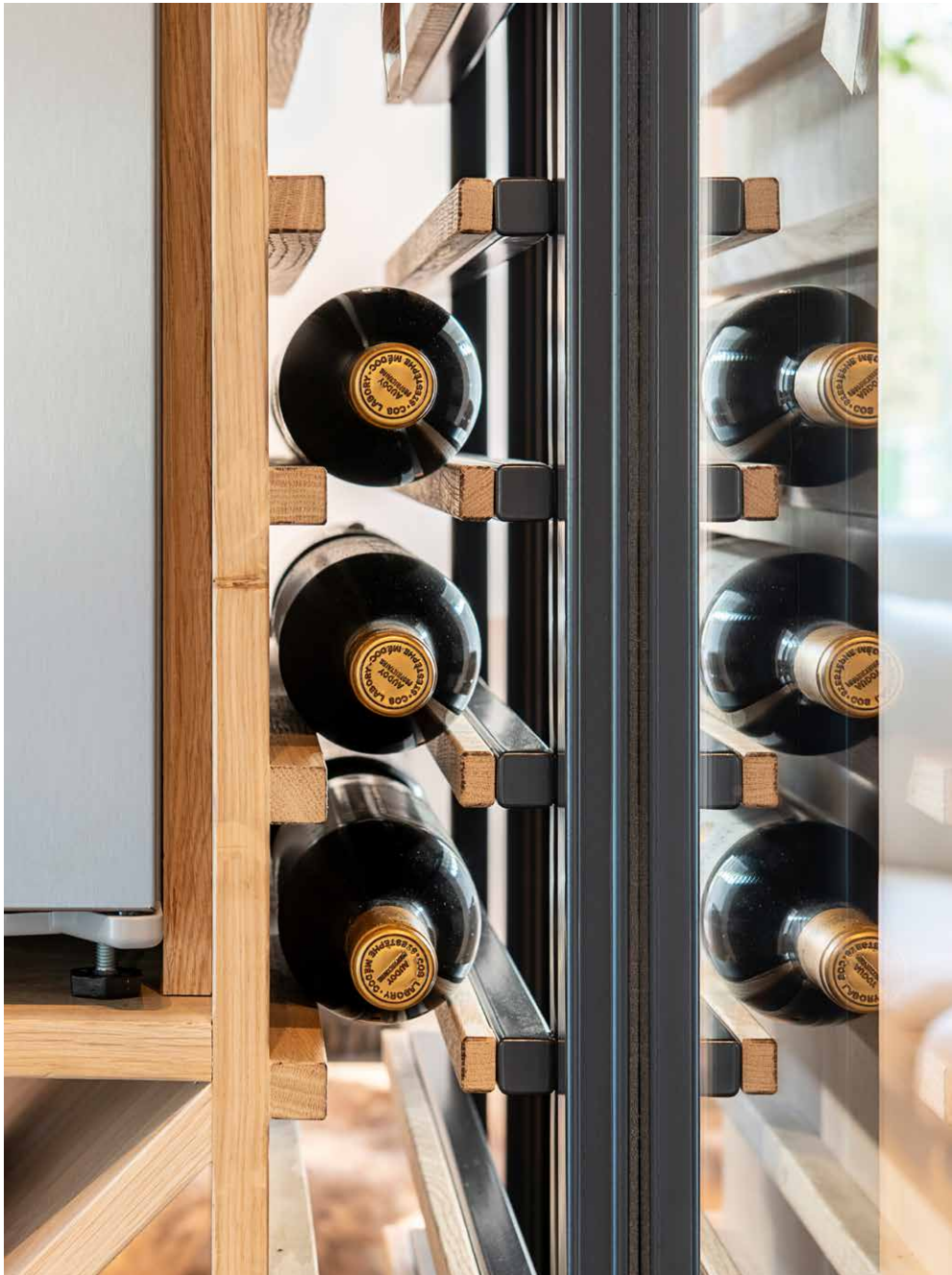
FUNCTIONAL AND BEAUTIFUL

The four pivot doors have been chosen based on functionality and aesthetics. Thanks to the FritsJurgens pivot systems, narrow frames and seams are possible. Because of the pivot hinges, the door movement is fully controlled, and the wines are protected.

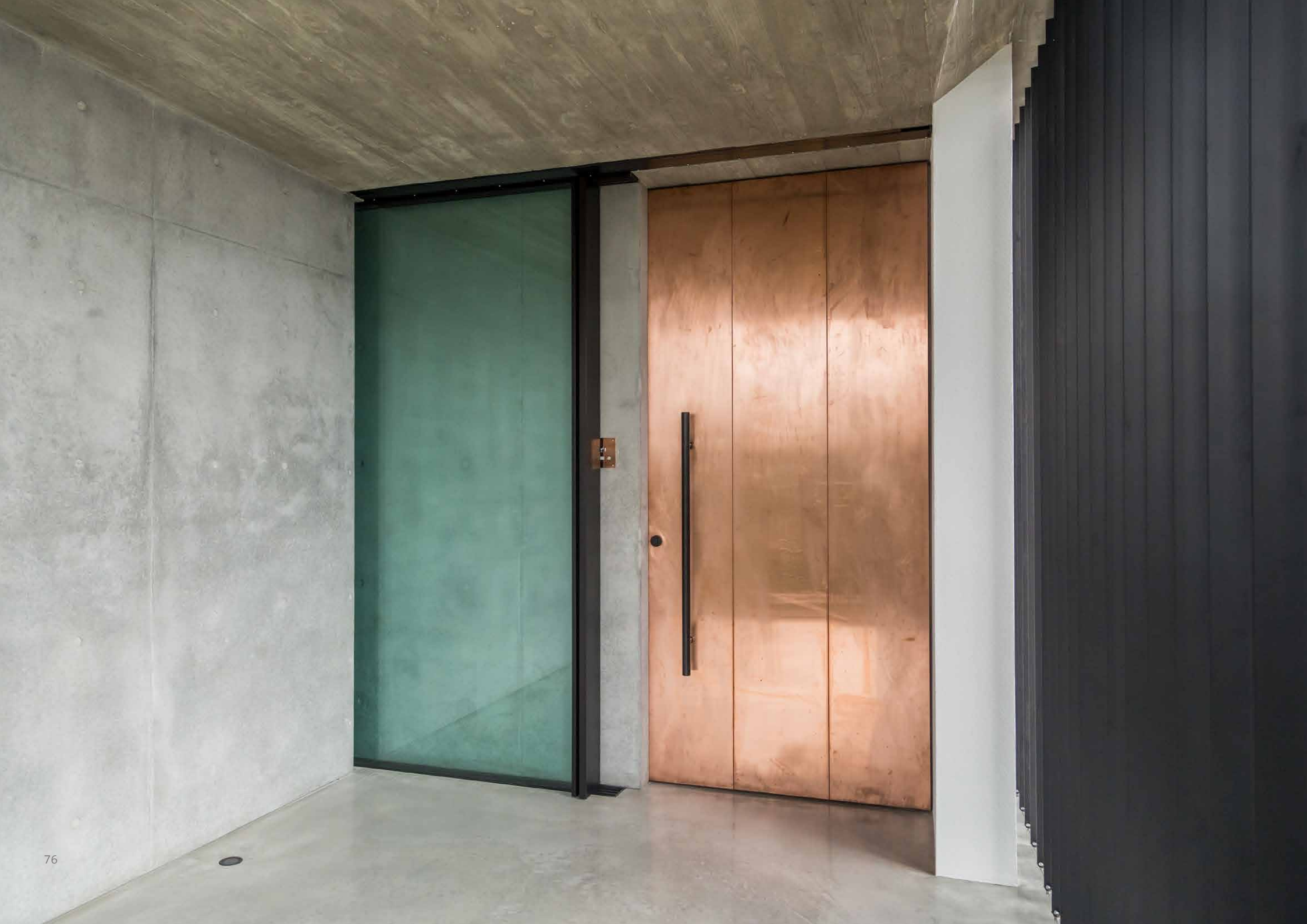
This makes this project a unique example of ease of use, comfort, and design, all in one.

DESIGNED AND MANUFACTURED BY **PJOKKE DUTCH DESIGN**
FRITSJURGENS SYSTEM **SYSTEM M+**









PIVOT DOORS OF ANY MATERIAL

A COPPER EYECATCHER

High on the slopes of the Australian Collaroy Plateau is 'The Eagle's Nest'. This house was designed by Ian Bennett Design Studio. The pivot door through which you enter the house was made by the British The Copper & Zinc Roofing Company. The door is clad with beautiful, characteristic copper, which makes it a real eyecatcher.

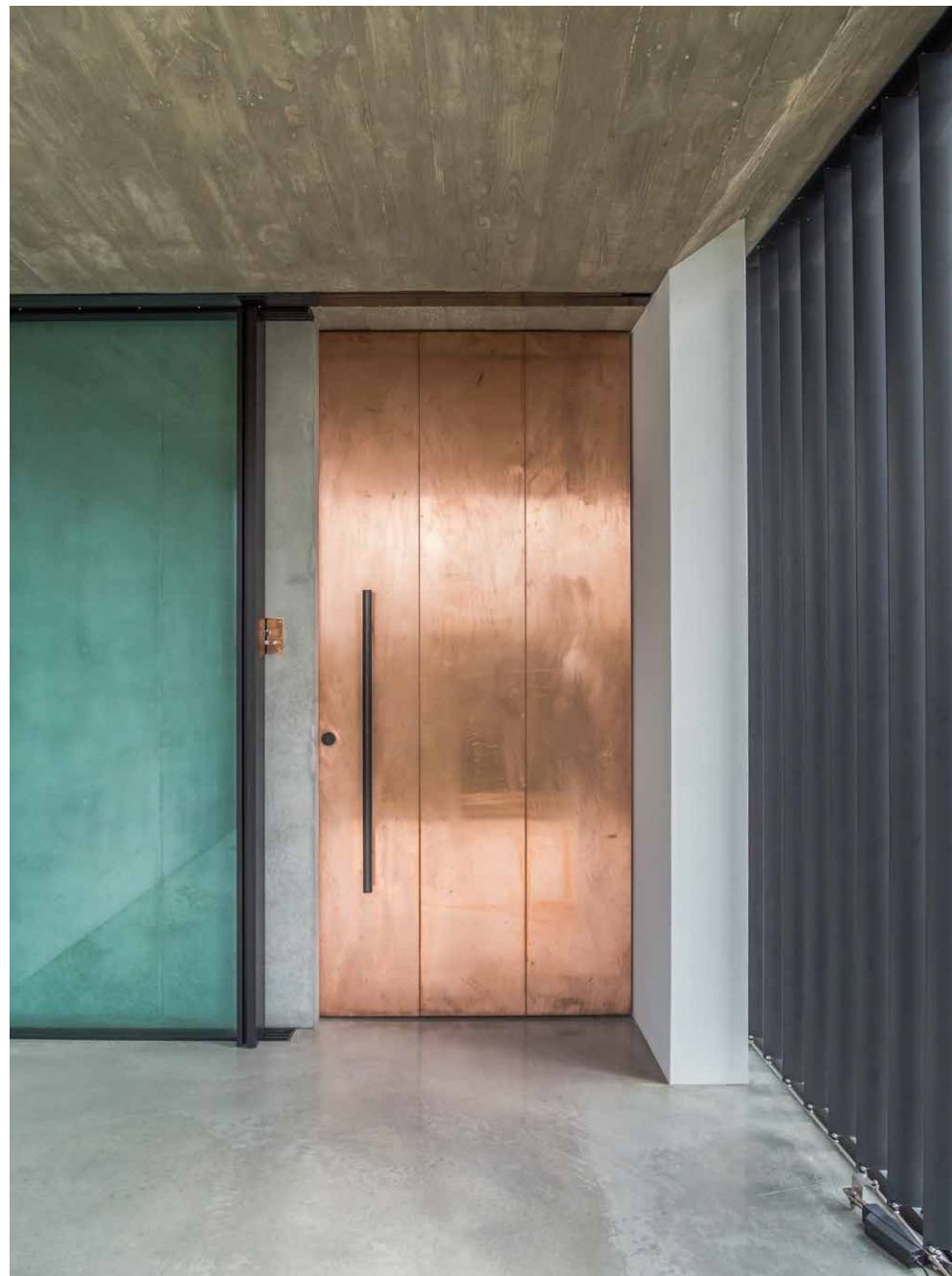
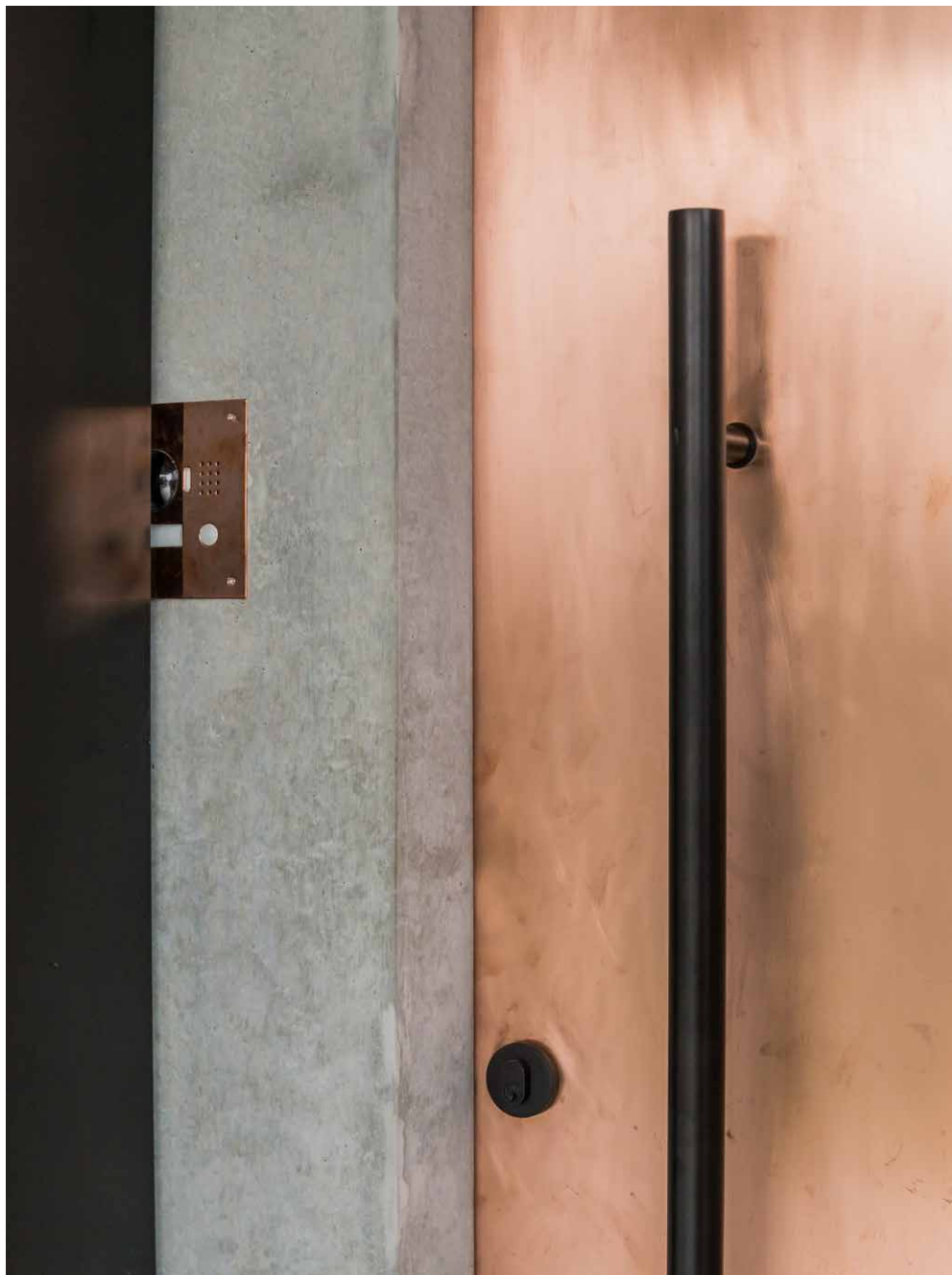
DREAM HOUSE WITH COPPER ENTRY

Copper is perfect for this exterior door. Dependent on the coating, the material can change color over time. The System M pivot hinges make the door move smoothly. When opened, it gives you a beautiful view of the Pacific. The pivot door matches the design well and forms the perfect entrance to this special dream house.

DESIGNED BY **IAN BENNETT DESIGN STUDIO** MANUFACTURED BY **THE COPPER AND ZINC ROOFING COMPANY**
IN COLLABORATION WITH **ULTIMATE DOORS AND JOINERY** FRITSJURGENS SYSTEM **SYSTEM M**









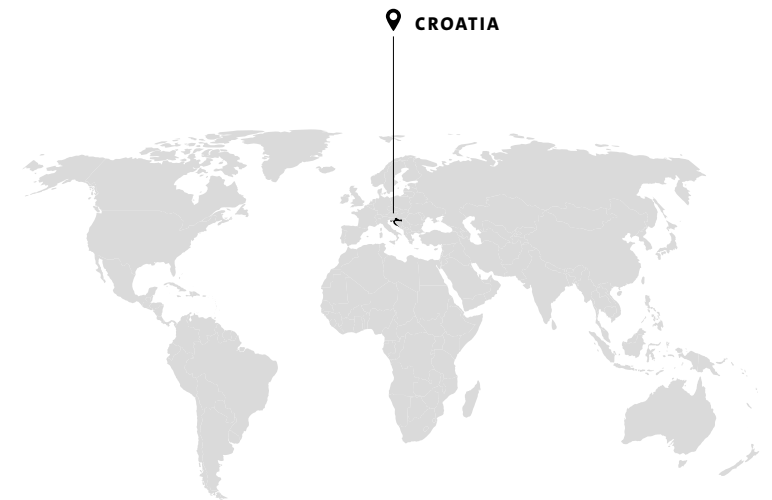
PIVOT DOORS IN CROATIAN OFFICE

DARK AND MODERN DESIGN

The office of the Croatia-based company Internova Furniture is a perfect example of a modern and comfortable working environment. The design is dark and modern, with black, wooden frames. That is why the staff affectionately call the office 'the black box'. Rows of glass walls with pivot doors have been placed throughout the building.

WOODEN PIVOTING ENTRANCE DOORS

Most office spaces have pivoting entrance doors, all equipped with System M pivot hinges. They can be secured at any angle of 90 degrees, as a result of which you can easily keep the self-closing pivot doors open. The wooden and glass pivot doors come in various sizes, which makes it possible to create the same atmosphere in all the rooms.



DESIGNED AND MANUFACTURED BY **INTERNOVA FURNITURE**



AN INSPIRING WORK ENVIRONMENT

WORKPLACE AND MUSEUM

FritsJurgens creates pivot systems for architecture and design. We empower architects, designers, and creators to create their best work, whether that is a stunning entrance or an interior that is refined to perfection. We like to work in a stimulating environment that inspires us to come up with yet another innovative pivot solution. Discover how we have decorated our head office with inspiring design classics and let us guide you through the history of modern design.



FRESH AIR

Recently, we have given the interior of our head office in Kolham, Groningen, a make-over. Marjan Bulder designed a work environment that has it all: pleasant workplaces, green accents, rooms to retreat and rooms to come up with new ideas together. Everywhere in the building you will find design classics by various designers found by Eva Dijkman. Their vision on design motivates us to stick to ours: developing revolutionary pivot systems.



EERO AARNIO: LIBERAL DESIGN PIONEER

On the first floor are two Ball Chairs by designer Eero Aarnio. The chair is a well-known design from 1963, a Finnish classic. It may even be one of the most iconic objects from the 1960s: an expression of the new pop aesthetics and an emblem of the space age.

In the 1960s, young Aarnio, like many of his time, experimented with round shapes. Nobody dared to do what he did, however: he created a complete sphere of glass fiber – a chair that looks a bit like an enclosed space. On January 11, 1963, he drew the first design for the Ball Chair. And he immediately knew: this is the show stopper he was looking for.

To this day, Aarnio's favorite Ball Chair is one with a white shell, with black upholstery spreading throughout it like a magical substance. The chair shields you from the world around you, leaving you alone with your thoughts.



POUL CADOVIOUS: REVOLUTIONARY

In one of our offices on the first floor is the Royal System cabinet system by Poul Cadovius, a design from 1948. Revolutionary at the time: the system is hanging on the wall, freeing space on the floor.

The Royal System by Cadovius was one of the world's first wall furniture systems. Functionality was an essential theme in all of his designs. 'Most of us live at the bottom of a cube. If we level the walls with the floor, we get a lot of space to live on', said Cadovius.



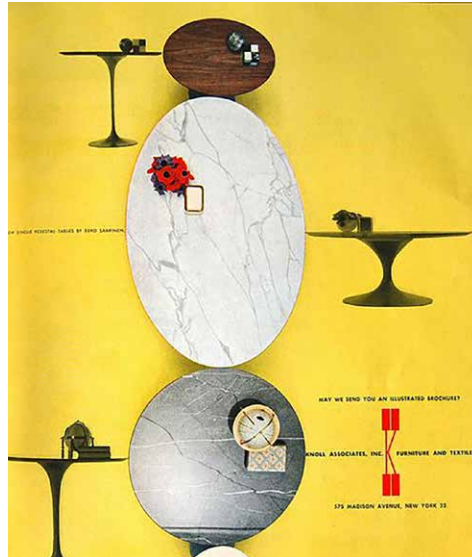
CHARLES AND RAY EAMES: PIONEERING COUPLE

Immediately upon entering the FritsJurgens office, you find two sets of the world-famous Eames Lounge and Ottoman. The design process by Charles and Ray Eames, spouses as well as designers, took years. Their aim was to create a lighter, more elegant, and more modern version of the traditional English club chair using the best material and exceptional craftsmanship. Needless to say that they have succeeded.

Both the Lounge Chair and the Ottoman are available in various types of wood, leather colors, and base finishes. They are produced by two companies only: Vitra for Europe and Asia, and Herman Miller for the United States. They guarantee – more than fifty years after the first design – the quality of the product.

The production process, which consists of a fixed process of 47 steps, has been the same for fifty years, except for a slight change: the size. Compared to the 1950s, people have grown about 10 cm. That is why, in addition to the classic model, the Eames Lounge and Ottoman are now also available in model that is 5 cm larger.

Advertisement for Knoll - Eero Saarinen tables
in Progressive Architecture July 1958



EERO SAARINEN: MULTIDISCIPLINARY MIRACLE

The Tulip Table – devised by Eero Saarinen – is part of Knoll’s Pedestal Collection. You will find it in one of the meeting rooms on the top floor of the FritsJurgens office.

Immediately after finishing his studies in sculpting and architecture, the Finnish-American started designing furniture. Eero was known for his special way of working – continuously building new prototypes, in a manner comparable to sculpting. He created endless scale models

from a single design, always looking for the perfect ratio.

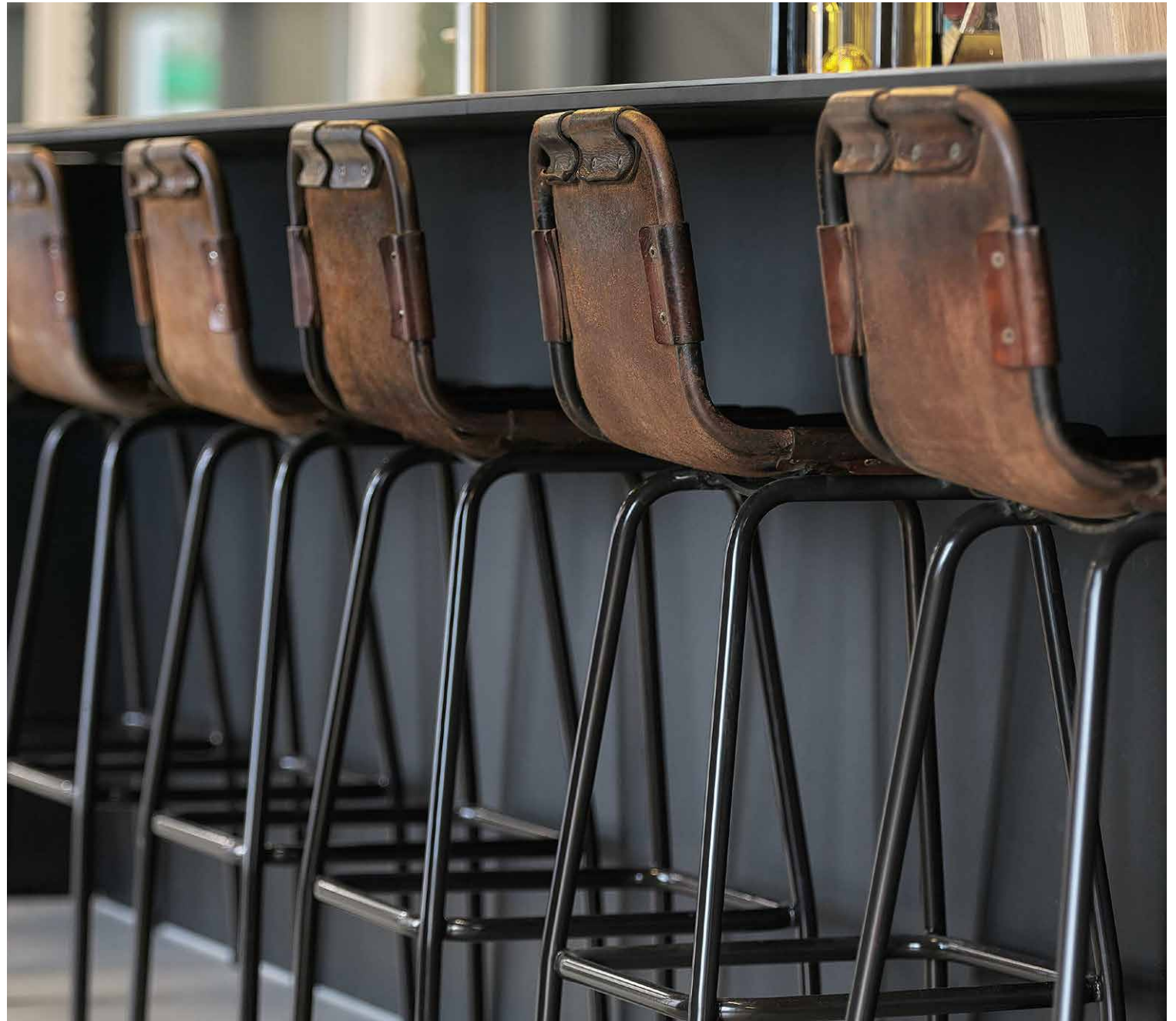
For Eero, form follows function. He originally designed the elegant base of the Tulip Table to provide more legroom and less visual noise. With the Pedestal Collection, Eero vowed to eliminate the ‘slum of legs’ under traditional four-legged chairs and tables. His furniture collection is a signature achievement of modern design.



CHARLOTTE PERRIAND: BELLIGERENT TALENT

The bar stools around our kitchen island were designed by Charlotte Perriand, for one of her most famous architectural statements: Les Arcs ski resort in Savoie. She combined prefabrication, standardization, industrialization, and mountain architecture in a design that forms one of the highlights of her career.

Perriand's oeuvre is large and filled with prestigious and well-known names and buildings, such as Fernand Léger and Jean Prouvé. She designed the interiors of buildings such as Unité d'Habitation, but unfortunately, her name did not always end up on all of her work. For example, the Grand Confort chair was sold under the name of LC Collection, whereas Perriand was the designer. Fortunately, that has not stopped her from working and designing into old age.





SPACE JOINERY LOUVERED DOORS

ADJUSTABLE ROOM DIVIDERS

The owner of this dwelling wanted to have the option of hiding – or showing – the dining room from the hall. Five louvered doors proved the perfect solution. They do not only regulate the airflow: they also offer the desired flexibility. Space Joinery did a fantastic job on this streamlined design, in line with the remaining joinery.

COMPLETE FREEDOM

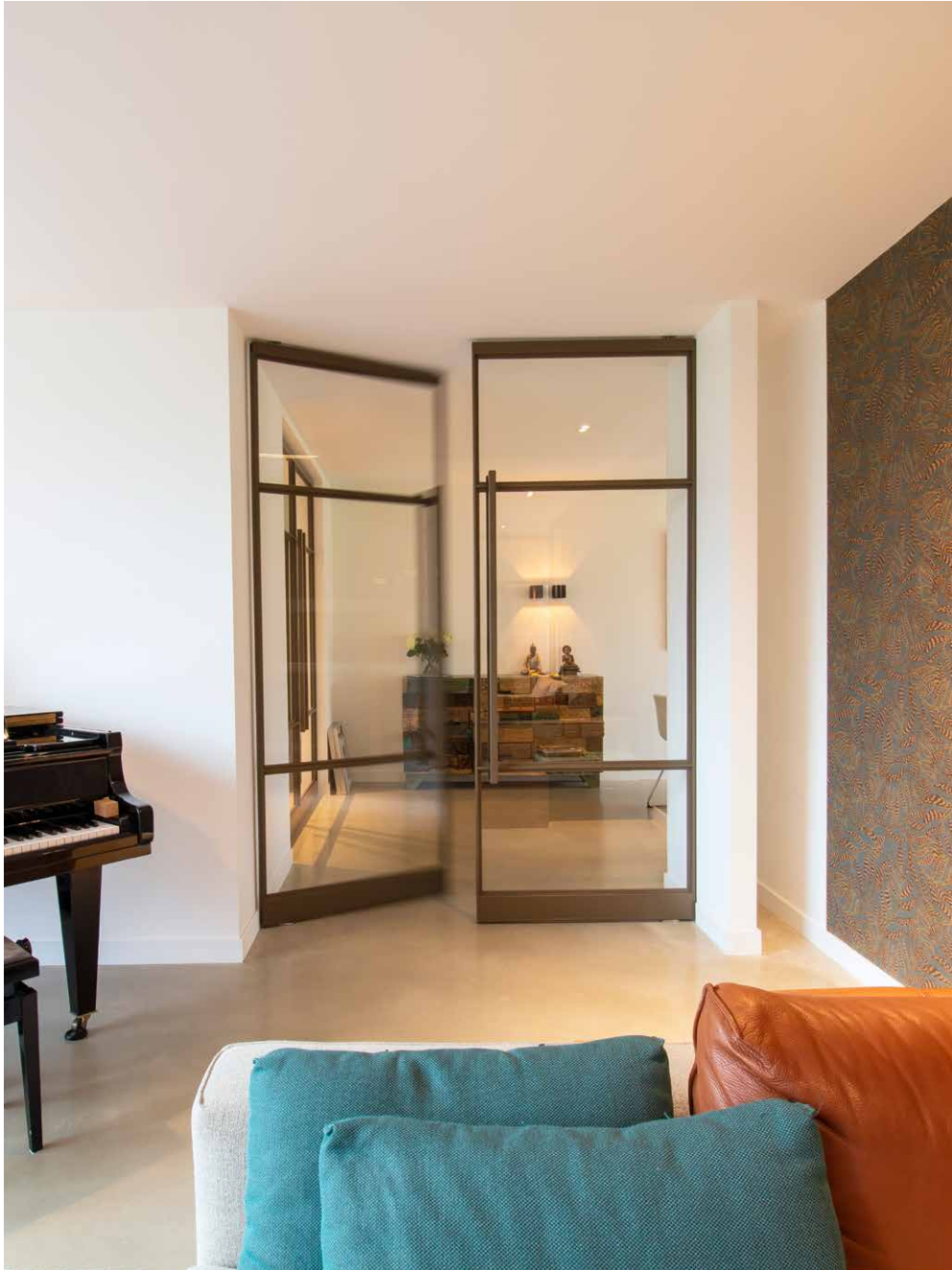
The louvered doors are made of oak and rotate with FritsJurgens System One hinges. They can rotate apart from each other 360 degrees and be secured in any position – in one smooth movement. That offers precisely the freedom that the customer wanted: the possibility to close the room partially, fully, or not at all at any given time.

DESIGNED AND MANUFACTURED BY **SPACE JOINERY**
FRITSJURGENS SYSTEM **SYSTEM ONE**









SUITABLE IN EVERY INTERIOR

MODERN AND INVITING

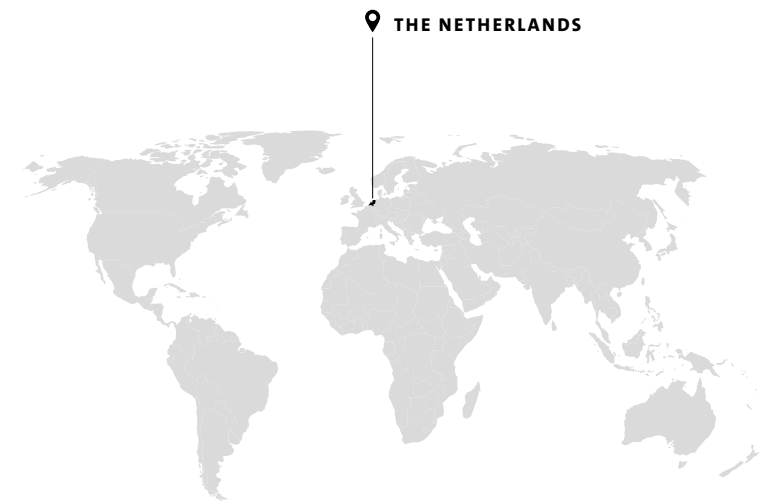
A glass pivot door with a steel frame is an inviting and contemporary interior solution. This design by Pols Metaal proves that modern is not the same as cold and impersonal. On the contrary: thanks to the design freedom that FritsJurgens hinges offer, steel pivot doors come in all shapes and colors. This way, they always match the rest of the interior.

VERSATILITY OF STEEL

Steel frames are sustainable and timeless and form a surprising addition to transform a space –whether it is a large studio or a small room. These double steel pivot doors with invisible FritsJurgens hinges offer both openness and privacy, without impairing the atmosphere of the surroundings in which it is located.

MANUFACTURED BY **POLS METAAL**

PHOTOGRAPHED BY **FRITSJURGENS** FRITSJURGENS SYSTEM **SYSTEM M**





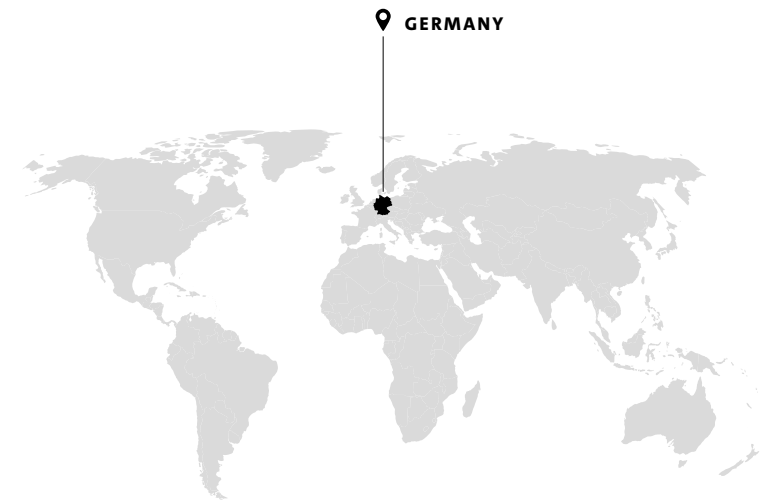
CREATING SPACE WITH PIVOT DOORS

THE ART OF BUERO WAGNER

The owner of Buero Wagner, the German architect Bruno Wagner, has a predilection for small-scale projects. He designed this beautiful black house on Ammersee Lake. He placed oak pivot doors to create more space and openness in the dwelling. He used FritsJurgens System M pivot hinges for smooth door movement.

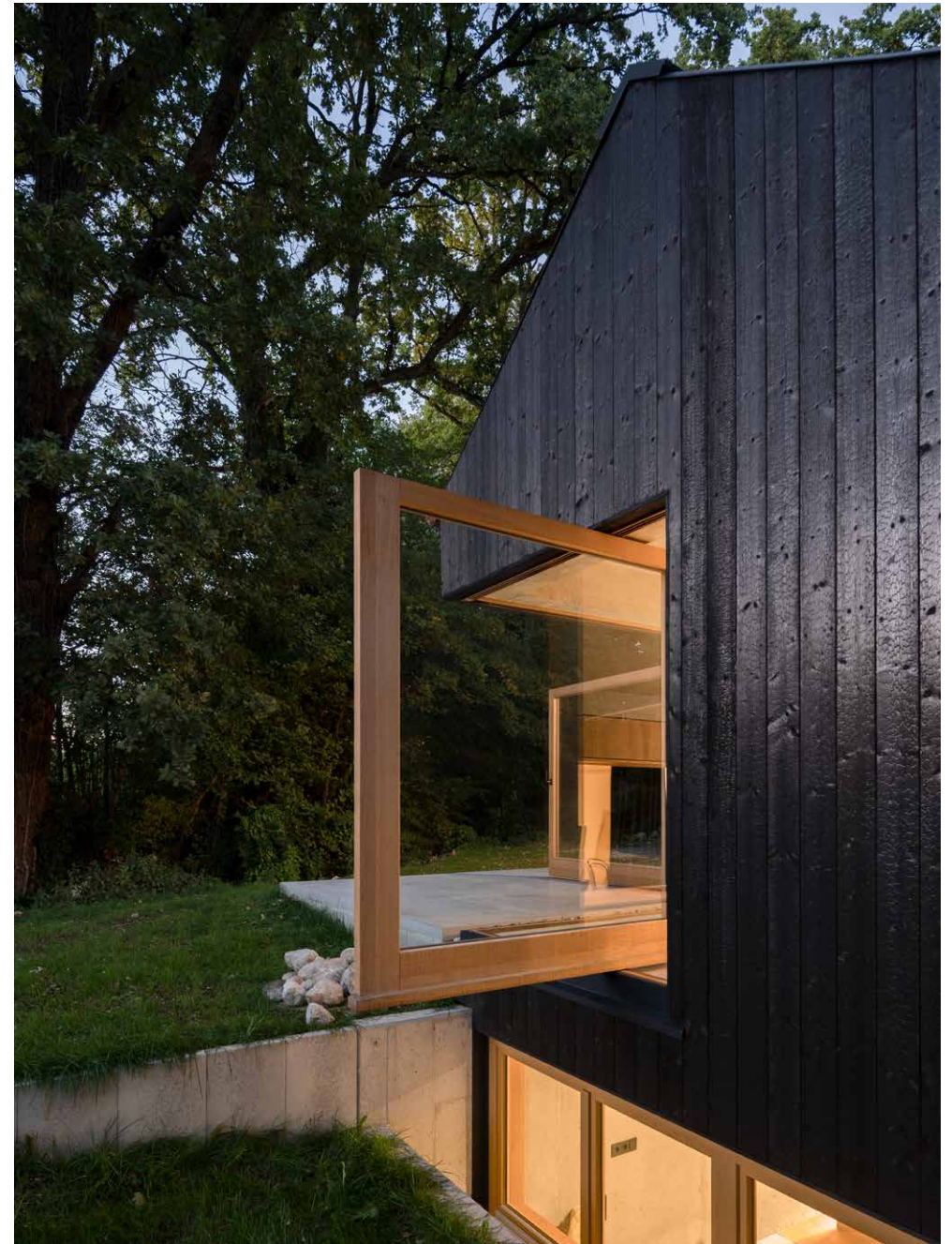
COMING HOME IN THE MIDDLE OF NATURE

Wagner only uses natural materials. That way, the dwelling matches its surroundings perfectly. The interior and the house are 'monolithic', which means that they form one whole. The two oak pivot doors reinforce that effect. When you open them, you find yourself on the beautiful terrace with a splendid view of the lake. This way, you are one with nature.



DESIGNED BY **BUERO WAGNER** MANUFACTURED BY **BAU- UND MÖBELSCHREINEREI LEUTENBAUER**
PHOTOGRAPHED BY **FLORIAN HOLZHERR**







THREE DOORS, ONE WALL

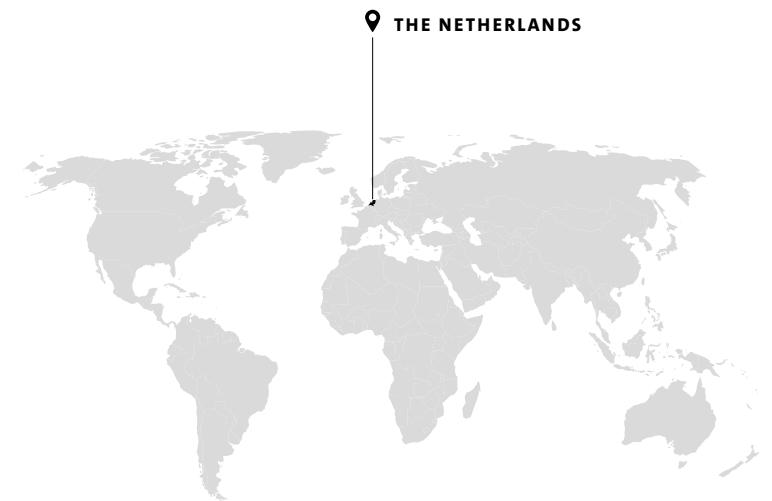
STYLISH AND SLEEK DESIGN

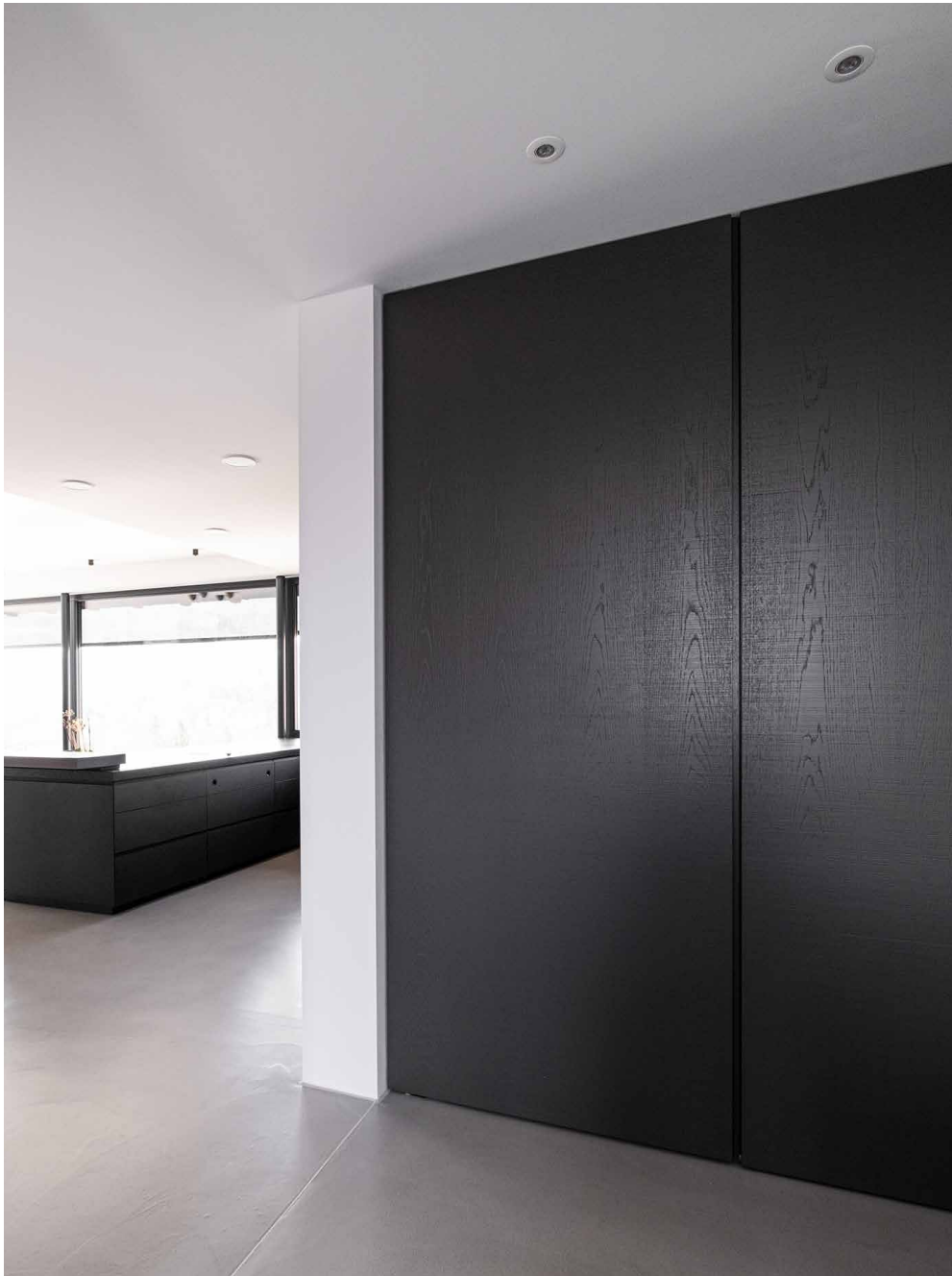
Pivot doors or pivoting walls are the ideal solution if you want to separate two rooms from each other. This stylish, wooden pivoting wall was designed by Hans Kwinten Interieurprojecten. It consists of three individual pivot doors that can turn 360 degrees by using FritsJurgens System 3 pivot hinges. The design of choice is sleek, with light wood.

ONE WITH THE INTERIOR

This wall matches the rest of the interior well. When opened, the doors are not at all disrupting. On the contrary: they really add something to the room. When closed, they are virtually invisible. The wall separates two rooms from each other, so privacy is guaranteed. The design by Hans Kwinten Interieurprojecten is the finishing touch to this dwelling.

MANUFACTURED BY **HANS KWINTEN INTERIEURPROJECTEN**
FRITSJURGENS SYSTEM **SYSTEM 3**





STANDING THE TEST OF TIME

ENDLESS OPTIONS

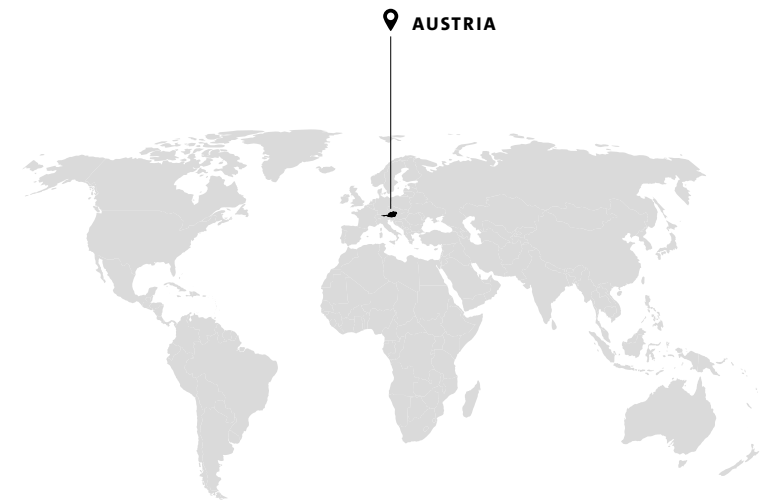
The Breithenthaler pivot doors deserve a place in any interior. Countless types of wood, finishes and coatings allow for unlimited design freedom. And that's not all, the doors are also future proof: with FritsJurgens floor plates they will stand rock solid in their place for generations, unaffected by daily use.

FUNCTIONAL, YET STYLISH

Storage cabinets are practical, but often look disorganized. That is why they are concealed here by using our System M pivot hinges. This way, they look smooth, and the elegant interior design remains intact. Thanks to the work of Total Solutions and the robust Breithenthaler doors, the storage cabinets were given a new look. Sleek, stylish and subtle.

MANUFACTURED BY **BREITENTHALER**

PHOTOGRAPHED BY **ELENA EGGER** FRITSJURGENS SYSTEM **SYSTEM M**





INTERIOR WITH CHARACTER

LIGHT, WARM, AND SOFT

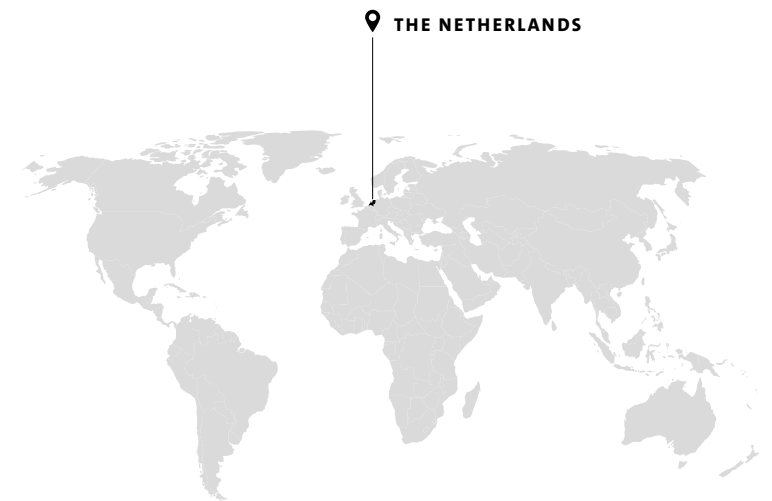
These steel doors by De Rooy are strong, stylish, and timeless.

The bronze gives them an authentic look, while the glass allows the light to shine through. What is special is the patinated finish: its effect is very different from that of powder coating. In combination with FritsJurgens System M pivot hinges, these doors create a soft look in any interior.

TAILOR-MADE FLOOR PLATES

For this project, we designed limited-edition floor plates that combine seamlessly with these steel pivot doors. Together they give character to the interior, without disrupting the warm, natural design. The FritsJurgens floor plates are available in all shapes and finishes that fit every pivot door.

MANUFACTURED BY **DE ROOY METAALDESIGN**
FRITSJURGENS SYSTEM **SYSTEM M**





LANSE RRI

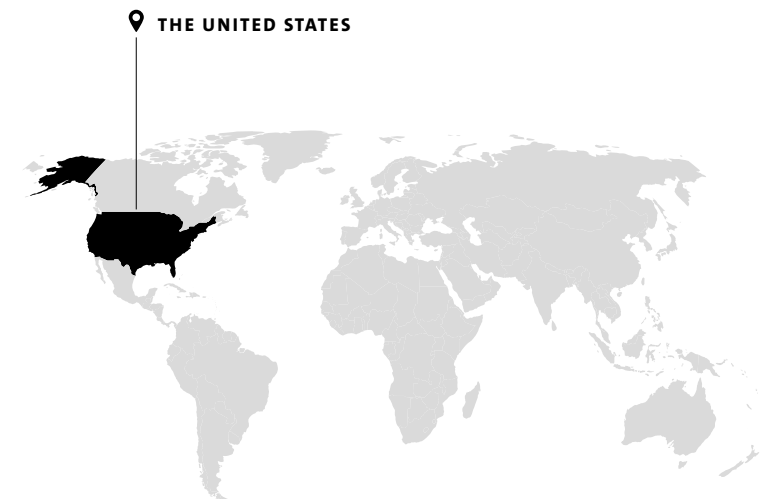
HIGH-END PIVOT DOORS

LIFESTYLE AND LUXURY

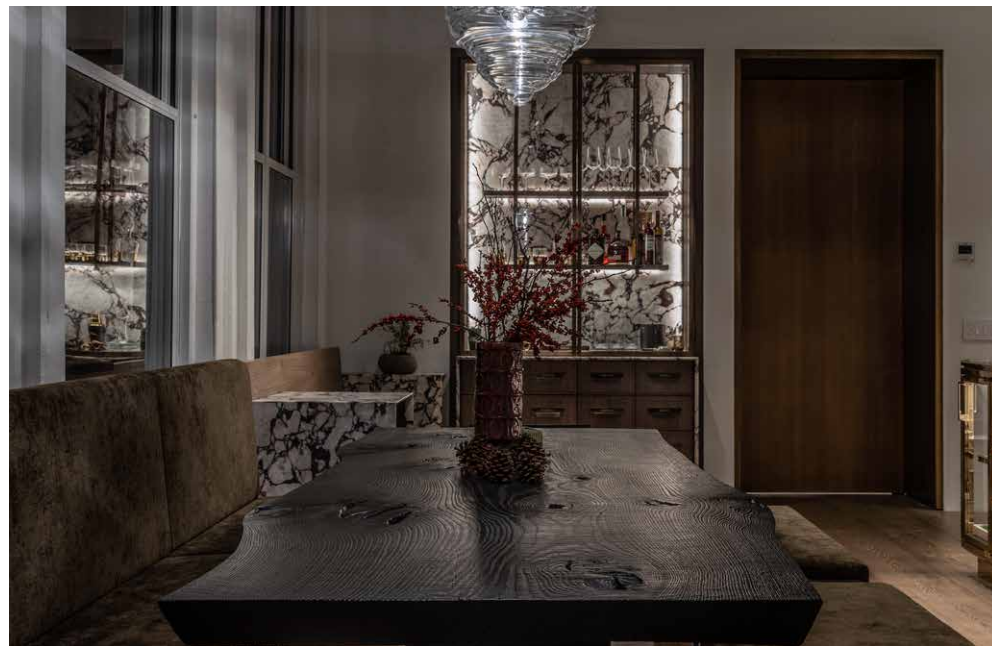
In the heart of New York City is the Lanserring NY Gallery, full of luxurious, tailor-made kitchen and lifestyle designs. Lanserring works together with leading agencies to make one-of-a-kind designs. For the gallery in New York, FritsJurgens installed two System M pivot hinges, which match this high-end setting perfectly.

SOMETHING FOR EVERYONE

A tailor-made interior calls for a hinge system that exudes quality. The silent opening and closing of FritsJurgens System M pivot hinges give these doors a luxurious appearance. The system is suitable for almost any door, in any place. System M offers unlimited freedom, especially since the doors can be secured at any angle of 90 degrees.



DESIGNED BY **LANSERRING DESIGN TEAM** MANUFACTURED BY **THE LANSERRING'S WORKSHOP RADASCHITZ**







STUNNING PIECE OF PIVOT

BIG, BIGGER, BIGGEST

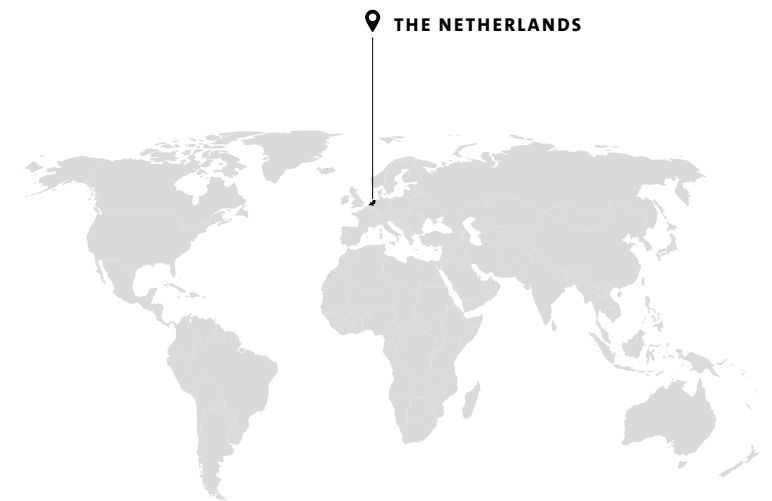
The demand for pivot doors has increased substantially over the past few years, and orders are becoming more and more complicated. The simplicity of FritsJurgens System One hinges makes them perfect for even the most impressive doors. Take this 2.73-meter-wide steel Preferro pivot door for example, which owes its characteristic metal look to the special sheeting.

(IM)POSSIBLE DESIGN

This pivot door explores the borders of what is possible. With its weight of over 400 kg, this steel door – designed by Preferro – is in the heaviest weight class. That is no problem for FritsJurgens System One pivot hinges, however. Thanks to the single rotation point and their small size, this system is broadly applicable.

MANUFACTURED BY **PREFERRO**

PHOTOGRAPHED BY **FRANK VERBRUGGEN** FRITSJURGENS SYSTEM **SYSTEM ONE**





STEEL AND GLASS PIVOT DOORS

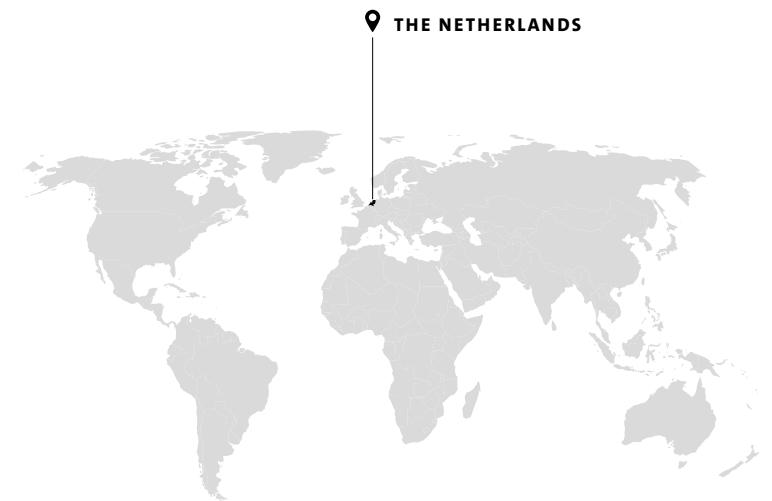
PERFECT BATHROOM ENTRANCE

With their glass and steel layout, these double pivot doors designed by De Rooy Metaaldesign form the perfect entrance to this modern bathroom. Since the brass details of the bathroom also feature in the doors, this design is a wonderful addition to the room. The addition of glass gives the interior a more open look and feel.

AN EYE FOR THE SMALLEST DETAIL

De Rooy Metaaldesign manufactures magnificent steel doors of cast-iron quality. Because they pay attention to even the smallest details, they can make the best suitable pivot door for every type of interior. And thanks to the timeless and maintenance-free FritsJurgens pivot hinges, the doors also open and close smoothly.

MANUFACTURED BY **DE ROOY METAALDESIGN**
FRITSJURGENS SYSTEM **SYSTEM M**









DESIGN WITH HIDDEN PIVOT DOOR

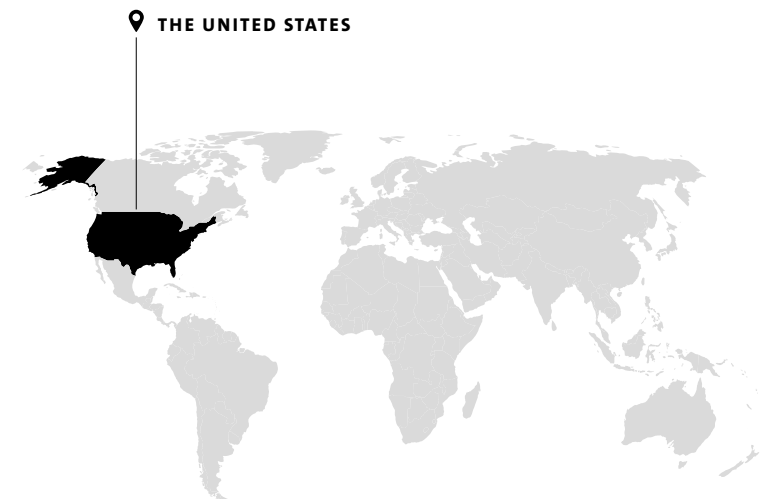
A SURPRISING ENTRANCE

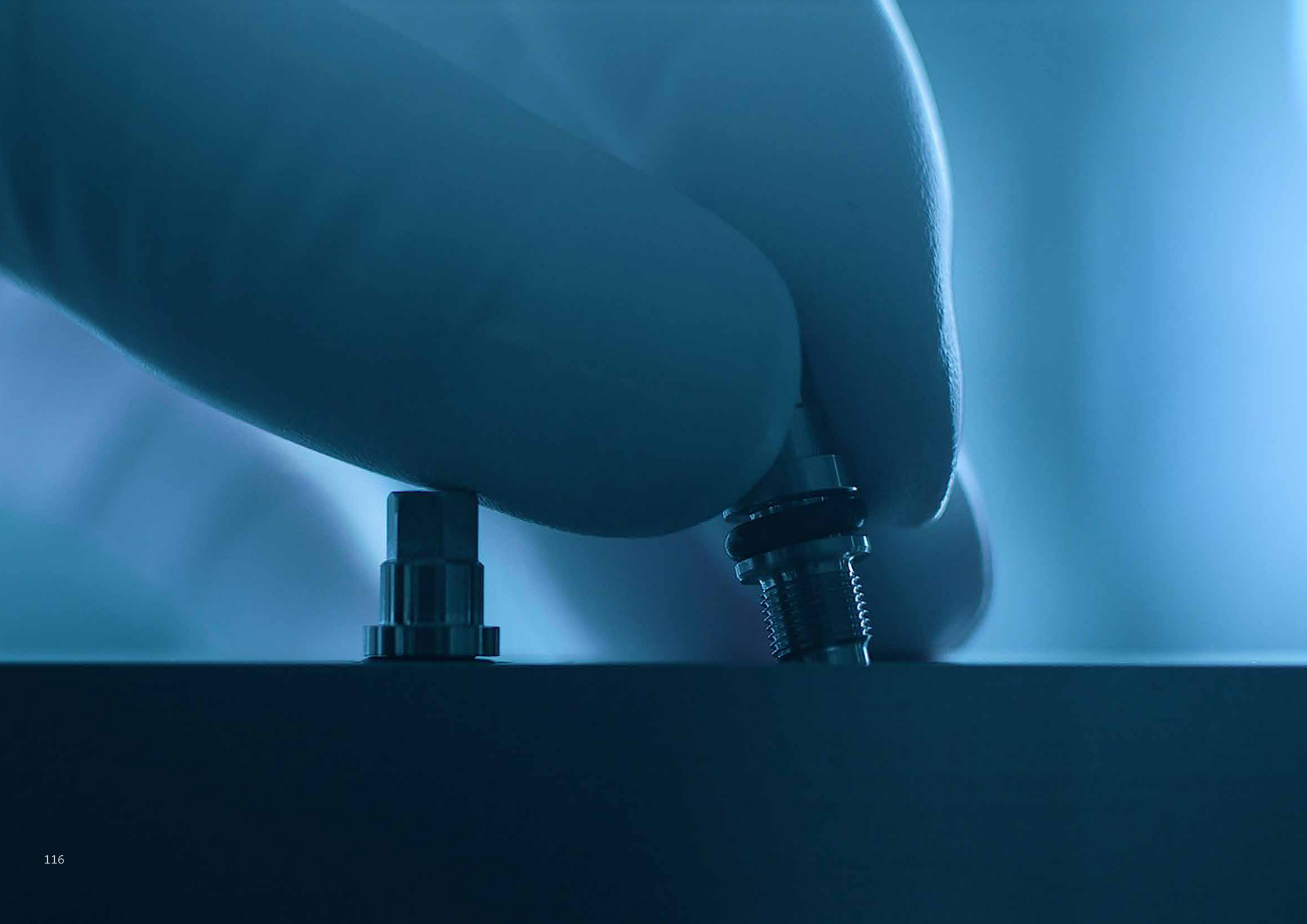
This wooden exterior door is a design by Fuse Architects and Builders, a U.S.-based design studio that specializes in progressive and modern architecture. The pivot door is designed such that it is hardly visible. The 'hidden' door smoothly blends into the rest of the design and is a surprising entrance to the house.

DOOR WITH ILLUMINATED BARS

The door is 25 cm thick and weighs nearly 300 kg. Nevertheless, it can rotate smoothly thanks to a FritsJurgens System M pivot hinge. The pivot door is made of oakwood. Fancy detail: it is clad with acrylic bars that have been placed asymmetrically and that light up at night.

DESIGNED BY **FUSE ARCHITECTS AND BUILDERS** MANUFACTURED BY **ARCHITECTURAL MILLWORK & DESIGN**
PHOTOGRAPHED BY **FUSE ARCHITECTS AND BUILDERS** FRITSJURGENS SYSTEM **SYSTEM M**





CONTINUOUS IMPROVEMENT

FritsJurgens strives for the best quality: every system that leaves our head office has been designed, developed, and tested with attention to detail, and is made of only the best materials. This enables us to create maintenance-free hinges that function flawlessly – even after 136 years of daily use. Read more about the production process of System M and System M+ and discover what makes these systems so durable.

All FritsJurgens pivot hinges are hidden inside the door. For a door with a thickness of at least 40 mm, the system and the encasing must be exactly 32 mm thick.

The system carries and controls doors with weights up to hundreds of kilos, sometimes of extreme dimensions. This requires high-end technology and strength in a compact space.

The casing of our systems is made with a Japanese machine by Matsuura, which is known for its extreme precision. To ensure optimum force distribution on the system, the casing is made out of a single piece of aluminum. This means: as few connections as possible and no gaskets to prevent leaks and inaccuracies.

WELL-PROTECTED SYSTEM

The casing of FritsJurgens systems is anodized. This means that the surface areas on both the inside and the outside have a protective, corrosion-resistant layer. This provides a stronger and wear-resistant finish, which is essential for the moving parts inside the system. System M and System M+ have a very high corrosion resistance. The performance of these systems remains excellent, even under the most diverse circumstances.



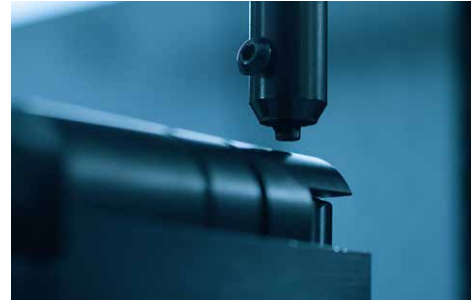
MADE OUT OF ONE PIECE

The casing contains separate brackets, the shape of which is extruded out of a single piece of aluminum. We do not bend any part of the bracket, to prevent internal stress in the material. In combination with a specified radius on the bracket, this gives the hinge the ultimate strength in every situation.



SUITABLE FOR EVERY FLOOR

All our floor plates are made of stainless steel (AISI 420) and tempered to withstand the weight of the door. This makes them also scratch resistant, because they are the only part that is visible. Only 8 mm of the floor plate fasteners disappear into the floor, which makes our systems suitable for all types of floors. We mount the plate with strong elastic, high-tensile, glue, and glue chambers ensure equal distribution. This offers extra ease of installation.



STRONG SPRING SYSTEM

FritsJurgens System M and System M+ make use of double spring technology – especially designed for these systems because of the limited space. The stronger spring enables more pressure for the desired force. Every spring is calibrated to confirm the pressure load.



SMOOTH DOOR MOVEMENTS

Movement technology converts hydraulic power into a controlled, smooth door movement. A unique technology that we use for System M and System M+, for both light and heavy doors. The control over the movement of the door also strongly depends on the adjusting screws. That is why they are especially made for us. They must be extra small to fit inside the systems, but their strength may not be compromised.



ONLY THE BEST QUALITY

To ensure a uniform pressure build-up, the piston and piston chambers must be entirely in line with each other. This is crucial to obtain control over the movement of the door. And to give space to the force that the system should be able to take, a maximum diameter of the piston chamber is required. The drilling must be consistent, so all drillings are measured on the smallest tolerance. In this part of the process alone, the hinge is checked on more than 60 points.

The axle is the base of the hinge and consists of multiple cam profiles that determine the movement of the door. The bottom of the axle is in the floor plate and makes it possible for the doors to carry up to 500 kg. Thanks to the high quality of the pivot axle, no circumstance can interfere with the system's operation. The axle and cam profiles are made of tempered steel to ensure wear resistance and ultimate endurance. First, we heat them above 1000 °C and then we cool them. We do so in a vacuum environment – clean and oxygen-free.

Force is easily and smoothly distributed by the needle bearings. They ensure smooth damping when opening or closing

the door. The smooth distribution of force and the well-balanced distribution of the pressure load make it possible to open the pivot door with just the touch of a finger.

A significant part of the assembly of the hinges is done by hand, to guarantee the quality. Moreover, we test the systems inside a pivot door, before shipping them to the client. We do everything in our power to deliver on the promises of our products. In each part of the process, FritsJurgens strives for the best quality. We combine smart techniques, the best materials, and Dutch craftsmanship. We do so by focusing on the creation of revolutionary door solutions that last a lifetime.



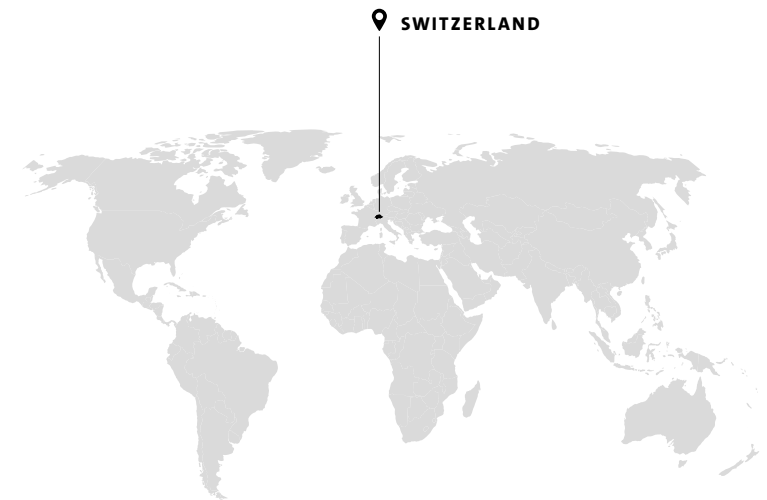
MULTIFUNCTIONAL PIVOTING WALL

SPECIAL MIRROR COATING

The new visitor center in Ebikon in canton of Lucerne, Switzerland, has six soundproof pivot doors in a row – finished on both sides with a sandblasted mirror. In it, you see your own reflection, but blurred. The doors are tailor-made for this project. Because they are soundproof, they create a closed and quiet setting for private affairs.

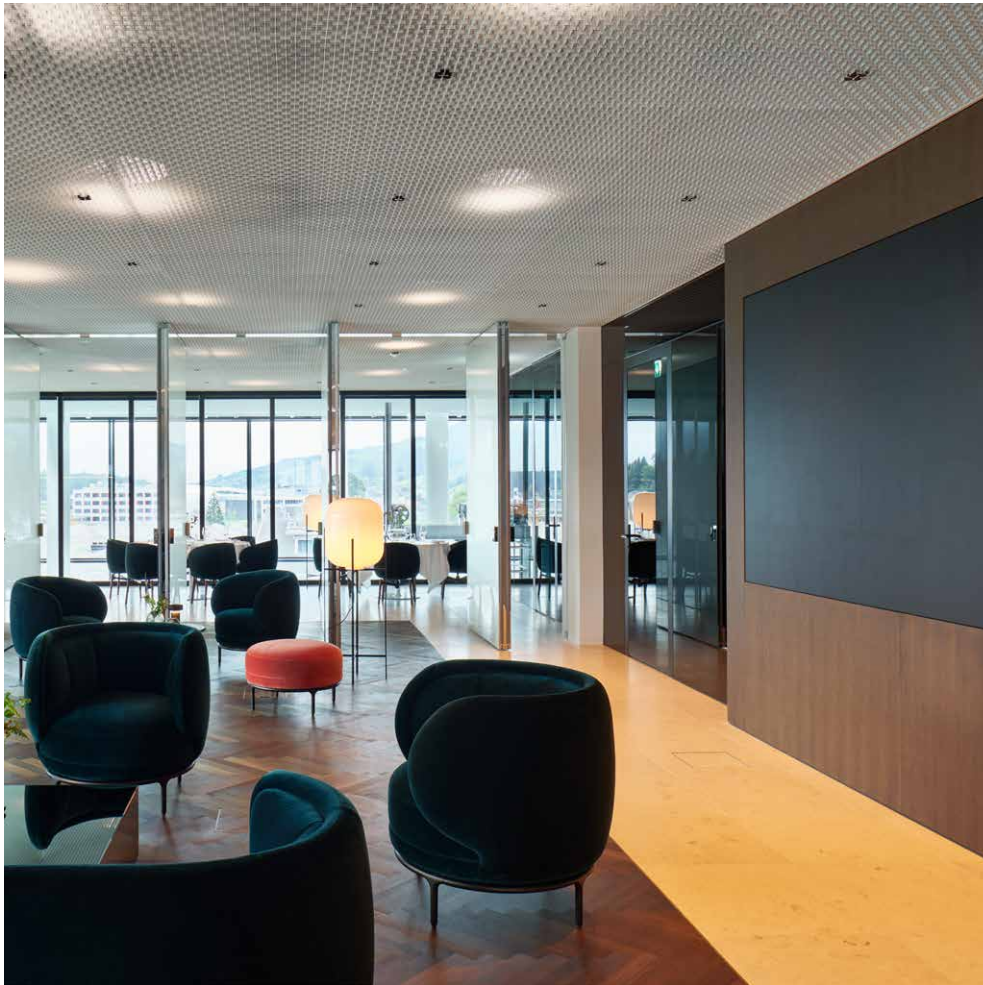
FLEXIBLE ROOM DIVISION

Mia Kepenek and her team were looking for a flexible solution to separate the dining room from the meeting room. Architect Mia Kepenek worked together on this project with the Swiss company Jos. Berchtold AG, an expert in special solutions for doors and walls. Jos. Berchtold manufactures innovative doors and walls with enough room for details.



DESIGNED BY **MIA KEPENEK INTERIORS** MANUFACTURED BY **JOS. BERCHTOLD AG**
PHOTOGRAPHED BY **HANNES HENZ** FRITSJURGENS SYSTEM **SYSTEM ONE**





DIFFERENT ROOMS AND ATMOSPHERES

The assignment was clear: create a comfortable space to receive clients, in a business-like yet warm atmosphere. To realize this, the center needed a soundproof wall that could be opened and closed easily and smoothly. The architects opted for a pivot door – the versatility of such a door is ideal in this situation.



A SPECIAL COATING TECHNIQUE

Finishing the doors with mirror coating was quite a challenge, for it was not the intention that the wall would be completely reflecting. To create the desired effect, a glass artist was asked to sandblast the mirrors – a special technique that allows you to work deep into the mirror.



COMPLETELY SOUNDPROOF

Because, in this project, it was very important to create 100% soundproof private rooms, all the doors are made up of various soundproof layers. To complete the soundproofing, magnetic seals were used. In addition, the sides of the doors are covered with polished stainless steel: even when open, they don't lose their mirroring effect.

The wall also creates wonderful contrasts in the room. Take, for example, the reflection in the herringbone floor, which looks warm in the cold mirror glass. Moreover, the glass makes the room look bigger. This is a good example of how pivot doors are perfect in a glass design and are very suitable to form a mirrored wall.





TWELVE PIVOT DOORS IN A ROW

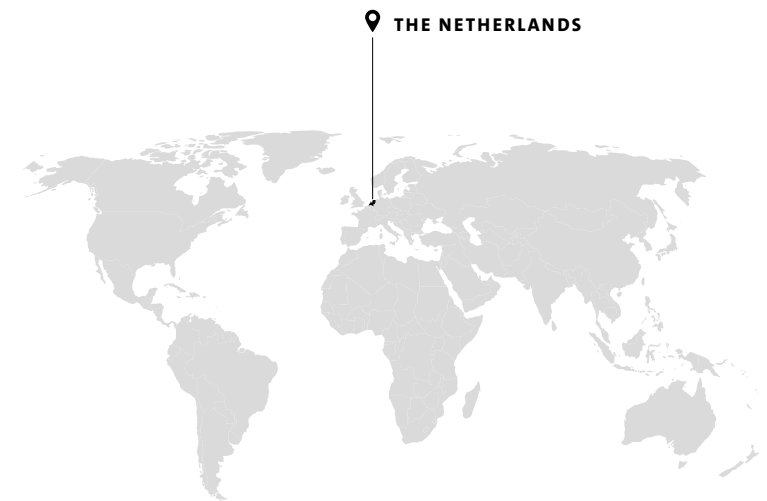
FIRST-CLASS ENTERTAINMENT

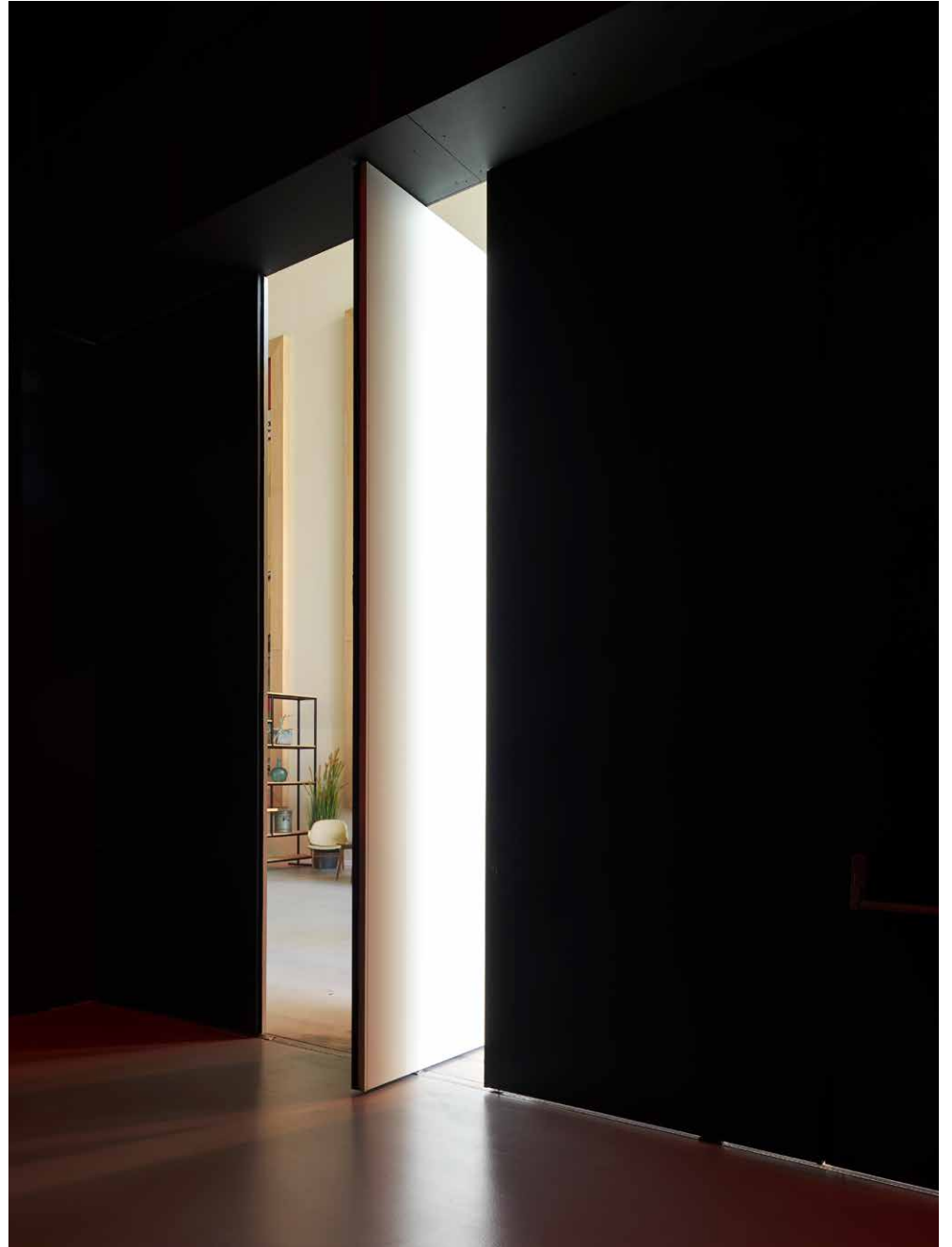
Pop venue AFAS Live in Amsterdam is the place to be for music and entertainment lovers. The building itself is impressive too. One of the eyecatchers is the theatre's 18-meter-wide pivoting wall, consisting of twelve pivot doors designed by Harryvan Interieurbouw. When closed, they form a stylish partition between the theatre and the lounge.

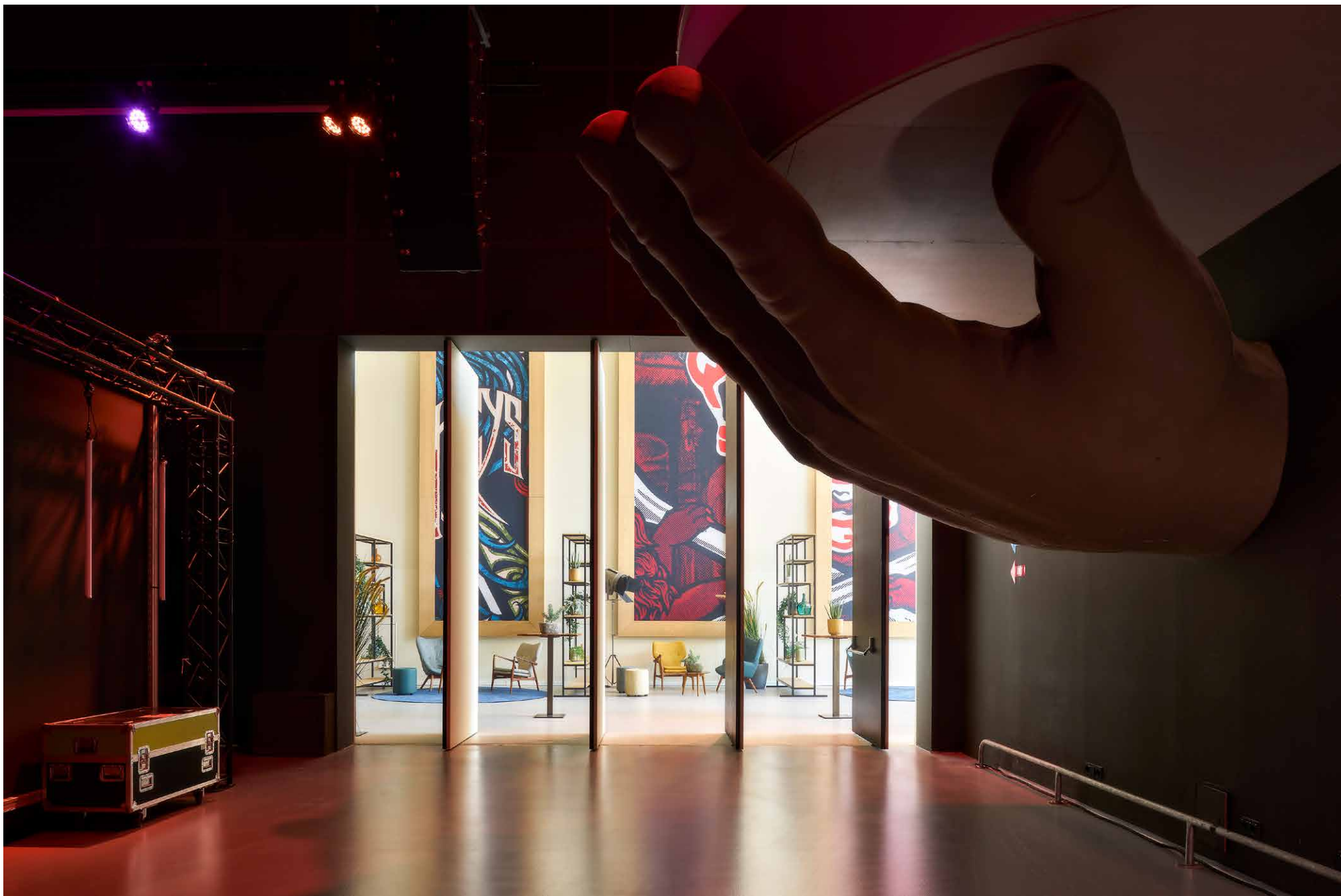
SMART SPATIAL IMPACT

On the outside, the design of the pivot doors is the same as that of the surrounding wall. When closed, the doors merge into the meter-high wall of the lounge. When opened, their glossy black interior reflects the colored lights of the theatre. This creates a striking contrast calling visitors to a halt: this way please.

DESIGNED BY **SEPTEMBER ARCHITECTUUR** MANUFACTURED BY **HARRYVAN INTERIEURBOUW**
PHOTOGRAPHED BY **HANS MORREN** FRITSJURGENS SYSTEM **SYSTEM M**







COLOPHON

FritsJurgens book 2 - EN
© 2022 FritsJurgens
December 2022

FritsJurgens B.V.
+31 (0)598 34 34 10
info@fritsjurgens.com
www.fritsjurgens.com

COPYRIGHT © 2022 BY FRITSJURGENS

All rights reserved. This book or any portion thereof may not be reproduced or used in any manner whatsoever without the express written permission of FritsJurgens. FritsJurgens has made every effort to credit the rightful designers, architects, and photographers included in this book. Anyone who nevertheless feels that their rights have been violated can contact FritsJurgens.

CREDITS

Thanks to our entire FritsJurgens team worldwide and our trusted dealers and partners—together you have made all of these amazing pivot door projects possible. Thank you for your hard work, dedication, and loyalty. Thanks to all the architects, designers, and makers worldwide that keep amazing us with their creativity and craftsmanship. You inspire us every day.

